



Marine
Management
Organisation



North Sea Fully Documented Fishery 2018

Martin Arris – October 2018



ENVIRONMENT
ISO 14001
CERTIFIED



QUALITY
ISO 9001
CERTIFIED



13 English registered vessels in the North Sea whitefish fishery

- **Requirements**

1. Comply with Landing Obligation (LO) which includes cod, haddock, whiting, saithe, plaice and sole
2. All participants are monitored with remote electronic monitoring (REM) by MMO for compliance
3. Access to uplift* of cod and saithe was only available to participants in the scheme
4. Duty of care to provide adequate REM data quality

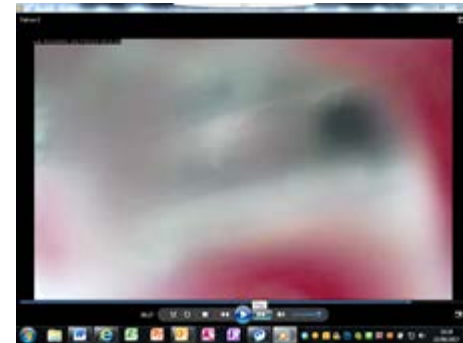
- **Incentives**

1. Small amounts of additional scientific quota
2. Flexibilities/derogations to obtain buy-in

* Uplift quota is the proportion of the quota that was previously discarded before the landing obligation

Challenges to implementing the 2018 scheme (what was learned from previous schemes and new issues)

- **Saithe (new to LO in 2018) choke**
 - Previous schemes have shown high discard levels.
 - Low market value with high lease price (economic choke)
 - Choke at vessel level well before national/international level
- **Dealing with occasional large catches of juvenile fish**
 - Lessons from 2017 (example of camera tampering)



- Addressing these issues delayed the scheme launch to June
- **Improved communications with skippers has been key (WhatsApp)**

Solutions

- **Interspecies Flexibility (ISF)**
 - Really more of an internal penalty system to act as an incentive to avoid saithe catch where it is not targeted.
 - Where saithe quota is unavailable at individual vessel level, PO's pay a penalty of cod, haddock or whiting quota, using a priced based "exchange ratio"
 - Managed at PO level
 - Participants report to PO when they have landed saithe without quota to initiate process
 - Participants must make reasonable effort to source saithe quota in the first instance
- True ISF would only be needed if we exceeded the saithe quota nationally (Commission reporting system)

Solutions (Cont.)

- **Discard derogation and conditions**

1. Allows for occasional discarding of undersized fish provided that it is **quantified and counted against quota** and participants can demonstrate:

- a) The use of selective nets, or other demonstrable fishing adjustments, to increase selectivity and avoidance of juvenile fish.
- b) That they can record and account for all discards, and allow for corroboration of amounts, including size verification, by REM systems.
- c) Record “haul by haul” on the e-log
- d) Immediate reporting to the MMO (within 24 hours) of any hauls with high numbers of juvenile fish.
- e) Movement off fishing grounds immediately on discovering an area with high numbers of juvenile fish.

Results to date



Marine Management Organisation

North Sea FDF Scheme Dashboard - July 2018

Explanations of tables, graphs and charts are on the following page.

Table 1

Month	Number of Vessels on Scheme	Total Number of Trips	Total Number of Trips for Which Hard Drive Data Received	Total Number of Trips Reviewed	*Audit Rate	Vessels Using Remote Access	Breaches of Terms and Conditions
July	13	60	27	8	13%	1	0
Year to Date	13	112	40	12	11%	1	0

* Received Remote Electronic Monitoring (REM) data trips for July 2018 was still low due to continued hard drive formatting issues on REM vessels.

Table 2

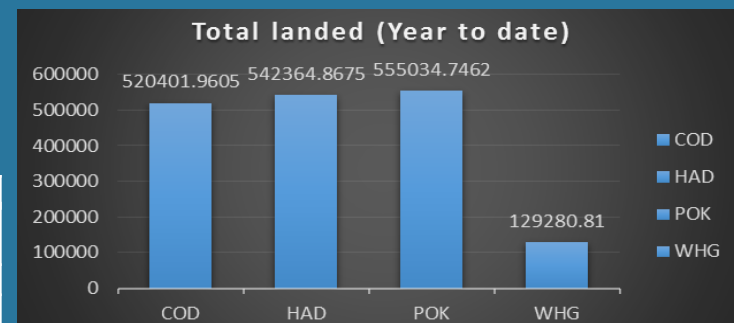
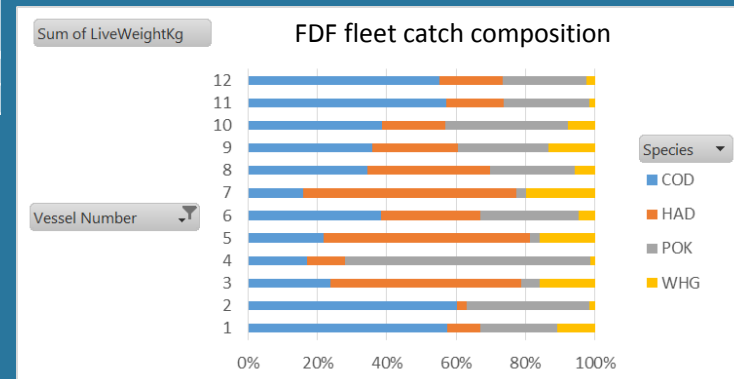
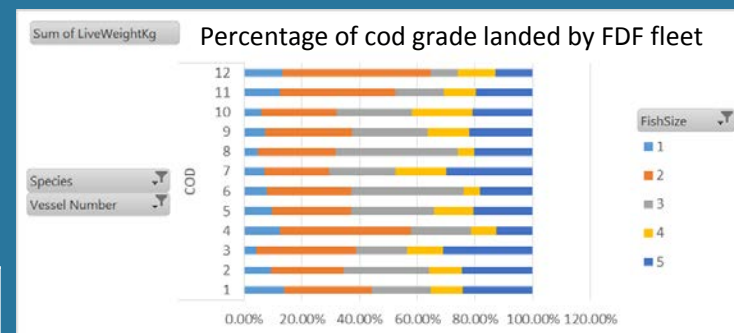
BMS Landed	POK	HAD	COD	WHG	PLE	SOL
July	Nil	320kg	80kg	80kg	Nil	Nil
Year to Date	Nil	560kg	110kg	120kg	Nil	Nil

Table 3

Interspecies Flexibility	Saithe	Cod	Haddock	Whiting
Average Price (£/kg) (June)	£0.86	£2.61	£1.61	£1.56
Exchange Ratio (POK-COD,HAD,WHG)		3 to 1	1.9 to 1	1.8 to 1
Total saithe landed without quota (t)	34.0t			
Total ISF Penalty Requested by PO's (t)		Nil	17.9t	Nil

Table 4

	POK	HAD	COD	WHG	PLE	SOL
Authorised Discards (kg) (Year to date)	1816kg	4491kg	2527kg	1705kg	325kg	Nil
% of total	0.33%	0.83%	0.49%	1.31%	-	-
Un-authorised Discards (%) June	0.007%	0.033%	0.039%	0.044%	0.000%	0.000%



Other areas where REM is deployed by MMO

- Running an incentivised trial with one Nephrops vessel to better understand bycatch issues and selectivity performance.
- Collaborative work with Cefas using REM to corroborate skipper-reported discard data in Southwest fisheries.
- Further reports have yet to be published for 2017

- The MMO is currently drafting guidance for the 2019 landing obligation rules:
 - Customised to individual fisheries
 - Additional guidance on selective gears
- The MMO is keen to engage with any suggestions on incentivised fully documented fishery schemes for 2019

Thank you - Any questions