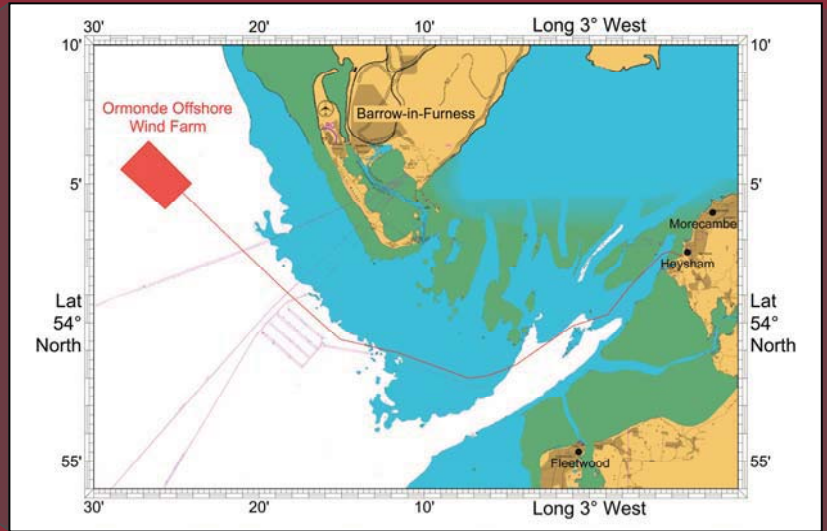
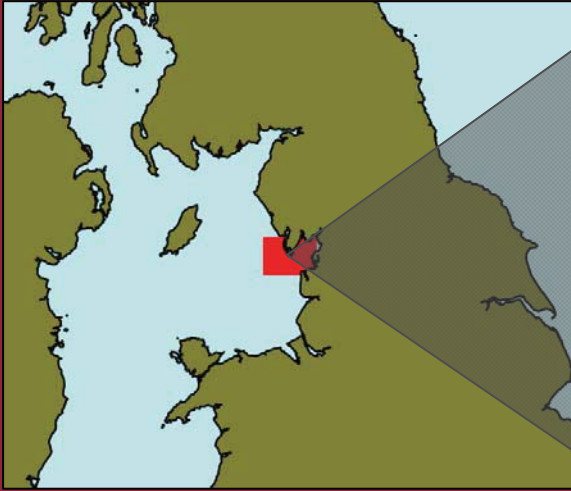




Ormonde Offshore Wind Farm

- Construction Activities -



Construction Activities

The Ormonde Offshore Wind Farm is to be located in the East Irish Sea, approximately 10 km from Walney Island. Offshore construction work is due to commence on 1st May 2010 and be carried out in two main phases. The first phase will continue from May through until the end of November 2010, and comprise installation of 30 wind turbine generator piles and substructures, an offshore substation platform (SSP), infield cables and an export power cable to the landfall at Half Moon Bay in Heysham. Activity will then cease until the beginning of April 2011, when the wind turbine generators will be installed and commissioned. This phase is anticipated to be complete by October 2011.

Key Programme Dates

Start Date	Activity	Vessels
May 2010	Installation of substructures wind turbines and SSP	Buzzard/Rambiz
July 2010	Installation of export cables	Stemat Spirit
August 2010	Installation of array cables	Pontra Maris
November 2010	Installation of the substation deck	Rambiz
March 2011	Installation of wind turbine generators	Seajack

Advisory Safety Zones

A 500 metre Advisory Safety Zone is requested around all Installation vessels while in the Wind Farm Construction Area with a 50 metre Advisory Safety Zone around each Turbine and Sub Station Structure after installation.

Following installation of the export cable, a 250 metre Anchor Exclusion Zone is requested along the Export Cable Route.

Buoyage

During construction the wind farm perimeter will be marked by north south east and west cardinal buoys. Once commissioned, a new South Cardinal and a new West Cardinal Buoy will be positioned permanently (positions of all buoys are overleaf). Solar powered LED Lanterns will be fitted to each Substructure / Sub Station as it is installed. These temporary lights will remain in place on each Substructure / Sub Station until the Wind Farm is commissioned.

Vessels

Construction vessels will exhibit the appropriate signals for day and night. Some vessels may have anchors and cables extending out to 500 M, and possibly be using diving services. Various tugs and barges will be in the vicinity of the construction site and may be restricted in their ability to manoeuvre. Crew boats will also be transporting members of the workforce to and from Barrow and Heysham Ports.

Examples of Vessels Involved

<p>'Rambiz' Foundations and substructures heavy lift vessel</p>	<p>'Buzzard' Installation vessel</p>	<p>'Stemat Spirit' Export cable lay vessel</p>	<p>'Pontra Maris' Inter-array cable lay vessel</p>	<p>'Seajack' Wind turbine generators installation vessel</p>

Contact Details

For further information, please contact:

Tom Watson – NFFO Fisheries Liaison Officer, Tel: +44 (0)1253 875565, Mob: +44 (0)7903 173624

Long 3° 31' West 30' 29' 28' 27' 26' 25' 24' 23' 22' Long 3° 21' West

Lat 54° 7' North

Lat 54° 7' North



TURBINE	CO-ORDINATES	TURBINE	CO-ORDINATES
OR A1	54°04.280'N 003°25.866'W	OR C1	54°04.834'N 003°24.885'W
OR A2	54°04.470'N 003°26.231'W	OR C2	54°05.032'N 003°25.241'W
OR A3	54°04.659'N 003°26.596'W	OR C3	54°05.231'N 003°25.597'W
OR A4	54°04.849'N 003°26.961'W	OR C4	54°05.429'N 003°25.953'W
OR A5	54°05.038'N 003°27.326'W	OR C5	54°05.627'N 003°26.309'W
OR A6	54°05.228'N 003°27.691'W	OR C6	54°05.826'N 003°26.665'W
OR A7	54°05.417'N 003°28.056'W	OR C7	54°06.024'N 003°27.021'W
OR B1	54°04.460'N 003°25.196'W	OR D1	54°05.009'N 003°24.219'W
OR B2	54°04.654'N 003°25.556'W	OR D2	54°05.212'N 003°24.570'W
OR B3	54°04.848'N 003°25.916'W	OR D3	54°05.415'N 003°24.921'W
OR B4	54°05.042'N 003°26.277'W	OR D4	54°05.618'N 003°25.273'W
OR B5	54°05.236'N 003°26.637'W	OR D5	54°05.821'N 003°25.624'W
OR B6	54°05.430'N 003°26.998'W	OR D6	54°06.024'N 003°25.975'W
OR B7	54°05.624'N 003°27.358'W	OR D7	54°06.226'N 003°26.327'W
OR B8	54°05.818'N 003°27.719'W	OR D8	54°06.429'N 003°26.678'W

BUOY CO-ORDINATES

Permanent (Post Commissioning)
 'West' 54°05.510'N 003°28.690'W
 'South' 54°03.790'N 003°25.430'W

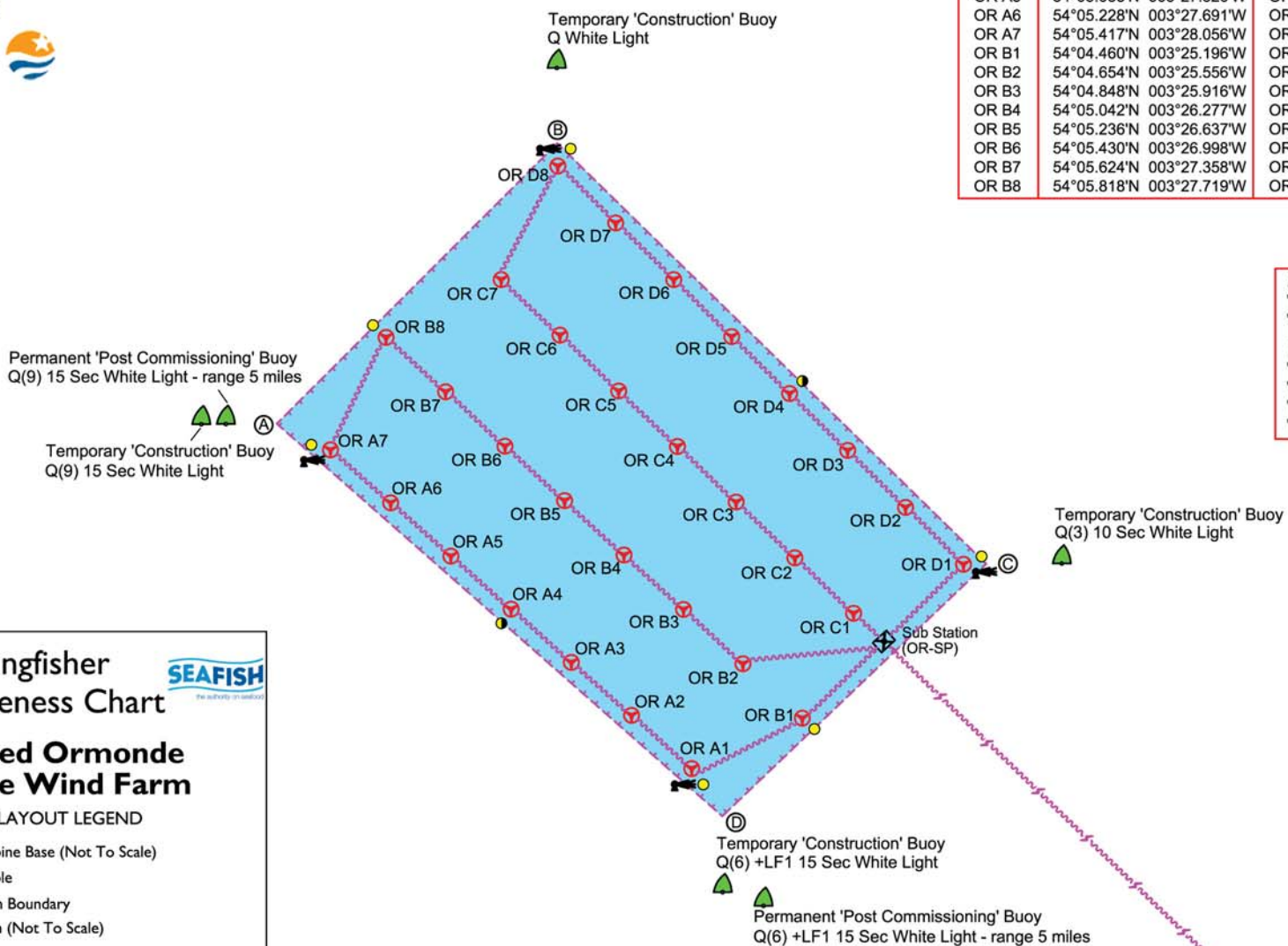
Temporary (Construction Period)
 'West' 54°05.508'N 003°28.839'W
 'South' 54°03.840'N 003°25.678'W
 'North' 54°06.780'N 003°26.684'W
 'East' 54°05.012'N 003°23.623'W

CORNER CO-ORDINATES

A. 54°05.510'N 003°28.381'W
 B. 54°06.510'N 003°26.681'W
 C. 54°05.010'N 003°24.081'W
 D. 54°04.110'N 003°25.681'W

EXPORT CABLE ROUTE

- 54°04.716'N 003°24.674'W
- 54°01.200'N 003°18.500'W
- 53°59.400'N 003°15.100'W
- 53°58.900'N 003°11.500'W
- 53°58.000'N 003°07.300'W
- 53°58.100'N 003°06.100'W
- 53°58.300'N 003°05.200'W
- 53°58.500'N 003°04.400'W
- 53°59.900'N 003°01.000'W
- 54°00.300'N 002°58.900'W
- 54°01.297'N 002°57.562'W
- 54°02.300'N 002°55.900'W
- 54°02.473'N 002°55.649'W
- 54°02.583'N 002°55.178'W
- 54°02.420'N 002°54.384'W
- 54°02.421'N 002°54.332'W



Kingfisher Awareness Chart

Proposed Ormonde Offshore Wind Farm

FIELD LAYOUT LEGEND

- Wind Turbine Base (Not To Scale)
- Power Cable
- Wind Farm Boundary
- Sub Station (Not To Scale)
- Navigation Lights (FI Y 5s - range 5 nautical miles)
- Navigation Lights (FI Y 2.5s - range 2 nautical miles)
- Omni Directional Fog Signal

WGS 84 Spheroid - Satellite Datum
 WOULD SKIPPERS PLEASE PLOT COORDINATES INTO THEIR FISHING PLOTTERS OR ELECTRONIC CHARTS
 COORDINATE COMPATIBLE WITH GPS SYSTEMS

NOT TO BE USED FOR NAVIGATION

Long 3° 31' West 30' 29' 28' 27' 26' 25' 24' 23' 22' Long 3° 21' West

Lat 54° 4' North

Lat 54° 4' North