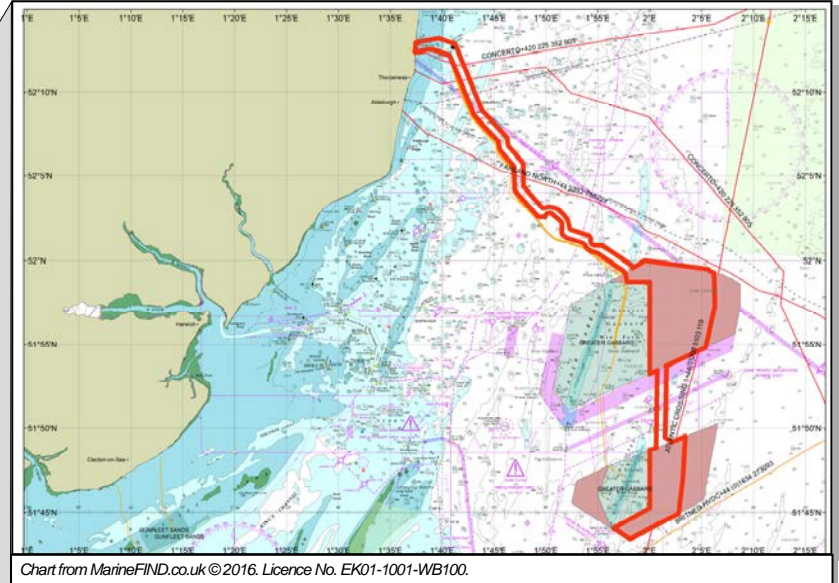


# Gallopier Offshore Wind Farm



## Description

Gallopier Offshore Wind Farm is currently under construction. The wind farm is located 27km off the coast of Suffolk adjacent to the existing and fully operational Greater Gabbard Wind Farm. RWE Innogy UK will continue to lead the development and construction of Gallopier, on behalf of the Gallopier Wind Farm Limited (GWFL) partners.

Gallopier consists of 56 wind turbines generating up to 336MW and is scheduled to commence operations by March 2018. 6MW Siemens turbines will be used, with a maximum blade tip height of 180.5m above LAT. There will be fifty-six buried subsea array cables linking the turbines to the offshore electricity platform and two buried subsea export cables approximately 45Km each will connect the wind farm to shore.

## Construction Schedule

Activity	2016		2017				2018	
	Q3	Q4	Q1	Q2	Q3	Q4	Q1	Q2
Installation of first export cable ( <i>start: August 2016</i> )	■	■						
Preparation works at wind turbine locations ( <i>start: August 2016</i> )	■	■						
Installation of wind turbine foundations ( <i>start: December 2016</i> )		■	■	■				
Export cable 2 installation ( <i>start: April 2017</i> )				■	■	■		
Array cable installation ( <i>start: April 2017</i> )				■	■	■	■	
Wind turbine installation and commissioning ( <i>start: May 2017</i> )				■	■	■	■	
Offshore substation installation ( <i>start: April 2017</i> )				■	■	■		
Wind farm operational ( <i>April 2018</i> )								■

## Contact Details

Marine Coordinator: +44 (0)1502 532087

**EMERGENCY CONTACT NUMBER: +44 (0)1502 532088**

# Kingfisher Awareness Chart

1°45'E 1°50'E 1°55'E 2°E 2°5'E 2°10'E



52°N  
51°55'N  
51°50'N  
51°45'N

52°N  
51°55'N  
51°50'N  
51°45'N

### Galloper Offshore Wind Farm

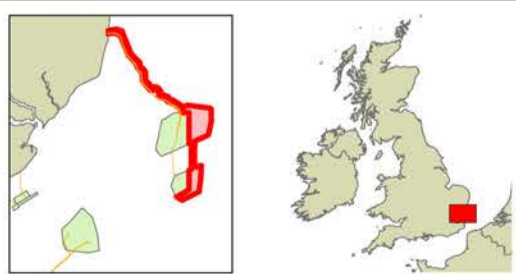
**Legend**

**GALLOPER WIND FARM - UNDER CONSTRUCTION**

- Buoy
- Wind Turbine
- SubStation
- Galloper CDM Area

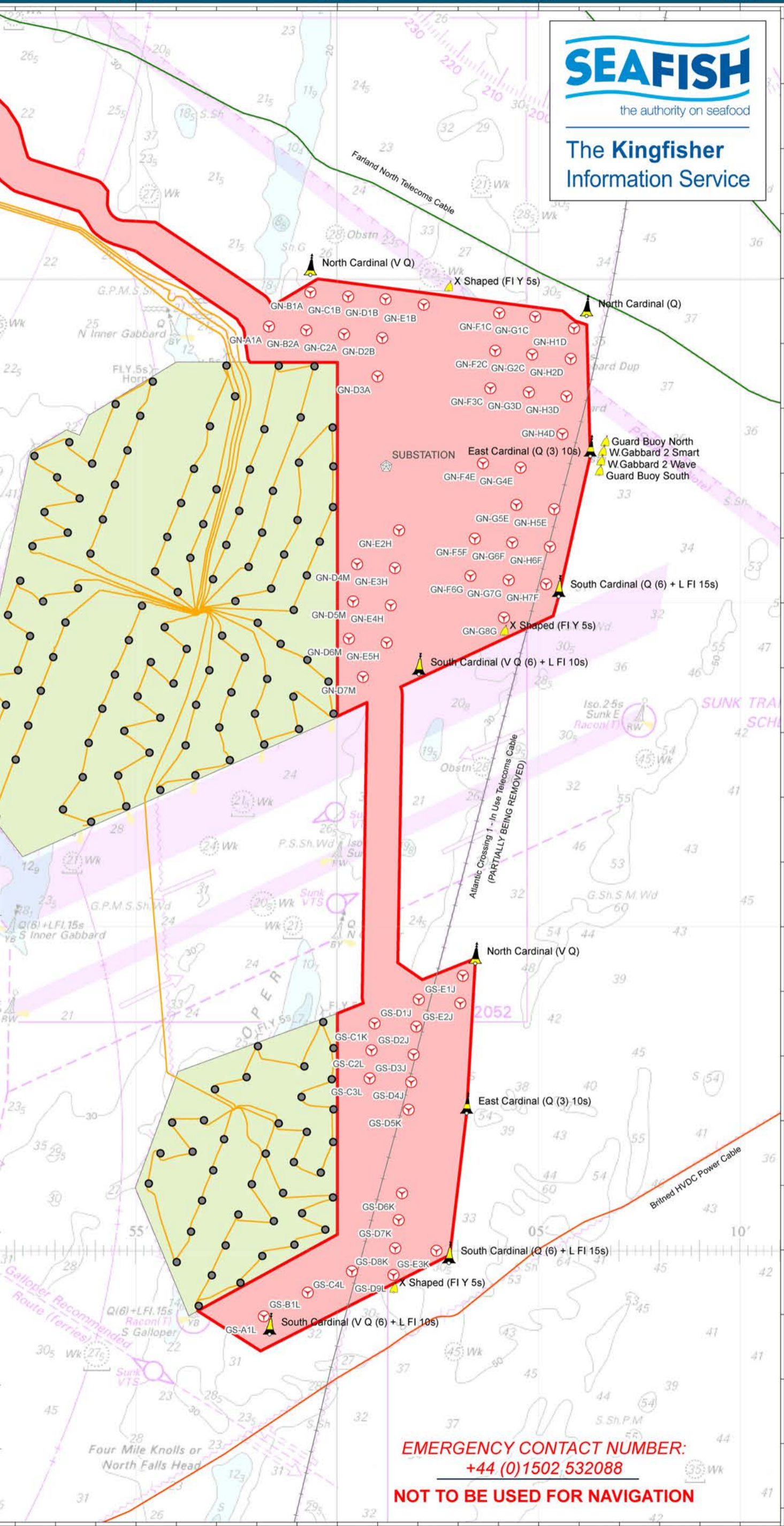
**STRUCTURES ALREADY IN PLACE**

- Gr. Gabbard Wind Farm Turbines
- Subsea Telecoms (PART REMOVAL)
- Subsea Telecom Cables
- Greater Gabbard Wind Farm Subsea Cables
- Subsea Cables - Power
- Constructed Wind Farm Boundary



Date: May 2016  
 Projection: WGS\_1984\_World\_Mercator  
 Spheroid: GCS\_WGS\_1984  
 Datum: D\_WGS\_1984  
 Scale: 1:190,000

This data is issued as a guide only. Seafish, cable / structure owners and Distributors accept no responsibility for any inaccuracies however caused. Please be aware that other structures & cables may exist in addition to those shown on this Chart. Chart from MarineFIND.co.uk © 2015. Licence No. EK01-1001-WB100.



**EMERGENCY CONTACT NUMBER:**  
**+44 (0)1502 532088**  
**NOT TO BE USED FOR NAVIGATION**

1°45'E 1°50'E 1°55'E 2°E 2°5'E 2°10'E

PLEASE KEEP CLEAR OF AND DO NOT DAMAGE SUBSEA CABLES IT IS AN OFFENCE TO WILFULLY DAMAGE SUBSEA CABLES  
 THESE CABLES CARRY HIGH VOLTAGES AND CAN BE DANGEROUS TO LIFE

## Application of Galloper Wind Farm Safety Zones during construction

The Secretary of State has approved the Application of Safety Zones on the Galloper Wind Farm project. These are defined as:

1. A Statutory 500m Safety Zone is in place at the location of each wind turbine, offshore sub-station and their foundations whilst work is being performed as indicated by the presence of construction vessels;
2. A Statutory 50m Safety Zone around all structures including the Offshore Sub Station whilst personnel are working on said locations.

### Wind Farm Coordinates

#### Wind Turbines

N°	Position
GN-G1C	51°59.411'N 002°04.912'E
GN-F1C	51°59.467'N 002°04.019'E
GN-E1B	51°59.596'N 002°02.145'E
GN-D1B	51°59.680'N 002°01.196'E
GN-C1B	51°59.722'N 002°00.268'E
GN-B1A	51°59.786'N 001°59.328'E
GN-H2D	51°58.763'N 002°05.794'E
GN-G2C	51°58.829'N 002°04.836'E
GN-F2C	51°58.888'N 002°03.919'E
GN-D2B	51°59.085'N 002°01.114'E
GN-C2A	51°59.142'N 002°00.165'E
GN-B2A	51°59.203'N 001°59.229'E
GN-A1A	51°59.261'N 001°58.301'E
GN-H3D	51°58.184'N 002°05.691'E
GN-G3D	51°58.247'N 002°04.755'E
GN-F3C	51°58.309'N 002°03.799'E
GN-D3A	51°58.491'N 002°00.999'E
GN-H4D	51°57.603'N 002°05.587'E
GN-G4E	51°57.086'N 002°04.548'E
GN-F4E	51°57.153'N 002°03.616'E
GN-H5E	51°56.446'N 002°05.384'E
GN-G5E	51°56.511'N 002°04.445'E
GN-H6F	51°55.865'N 002°05.277'E
GN-G6F	51°55.929'N 002°04.342'E
GN-F5F	51°55.991'N 002°03.413'E
GN-E2H	51°56.120'N 002°01.531'E
GN-H7F	51°55.289'N 002°05.185'E
GN-G7G	51°55.351'N 002°04.254'E
GN-F6G	51°55.416'N 002°03.303'E
GN-E3H	51°55.538'N 002°01.430'E
GN-D4M	51°55.598'N 002°00.489'E
GN-G8G	51°54.773'N 002°04.136'E
GN-E4H	51°54.963'N 002°01.325'E
GN-D5M	51°55.023'N 002°00.390'E
GN-E5H	51°54.384'N 002°01.224'E
GN-D6M	51°54.448'N 002°00.286'E
GN-D7M	51°53.857'N 002°00.635'E
GS-E1J	51°49.242'N 002°03.114'E
GS-E2J	51°48.817'N 002°03.052'E
GS-D1J	51°48.875'N 002°02.022'E
GS-D2J	51°48.456'N 002°01.961'E
GS-C1K	51°48.505'N 002°00.923'E
GS-D3J	51°48.023'N 002°01.893'E
GS-C2L	51°48.090'N 002°00.846'E
GS-D4J	51°47.598'N 002°01.832'E
GS-C3L	51°47.655'N 002°00.801'E
GS-D5K	51°47.171'N 002°01.768'E
GS-D6K	51°45.878'N 002°01.604'E
GS-D7K	51°45.463'N 002°01.522'E
GS-E3K	51°44.988'N 002°02.460'E
GS-D8K	51°45.027'N 002°01.437'E
GS-D9L	51°44.613'N 002°01.392'E
GS-C4L	51°44.670'N 002°00.361'E
GS-B1L	51°44.340'N 001°59.264'E
GS-A1L	51°43.972'N 001°58.174'E
GN-H1D	51°59.232'N 002°05.876'E

#### Substation

N°	Position
GN SUB	51°57.106'N 002°01.213'E

#### Galloper Project Boundary

*(Thinned for ease of reference to 50 metre accuracy)*

1	51°43.435'N 001°58.090'E
2	51°44.055'N 001°56.529'E
3	51°45.240'N 002°00.000'E
4	51°48.660'N 002°00.000'E
5	51°48.820'N 002°00.646'E
6	51°48.899'N 002°00.616'E
7	51°53.463'N 002°00.737'E
8	51°53.250'N 002°00.000'E
9	51°58.710'N 002°00.000'E
10	51°58.710'N 001°57.826'E
11	51°58.771'N 001°57.774'E
12	51°59.198'N 001°57.679'E
13	51°59.374'N 001°57.506'E
14	51°59.423'N 001°57.389'E
15	52°00.423'N 001°54.986'E
16	52°00.616'N 001°54.155'E
17	52°00.726'N 001°53.935'E
18	52°01.033'N 001°53.591'E
19	52°01.346'N 001°51.993'E
20	52°01.526'N 001°51.617'E
21	52°01.651'N 001°51.511'E
22	52°02.165'N 001°51.525'E
23	52°02.319'N 001°51.397'E
24	52°02.752'N 001°50.581'E
25	52°02.790'N 001°50.252'E
26	52°02.701'N 001°50.010'E
27	52°02.565'N 001°49.910'E
28	52°02.562'N 001°49.381'E
29	52°02.648'N 001°49.132'E
30	52°04.097'N 001°47.049'E
31	52°04.177'N 001°46.987'E
32	52°05.550'N 001°46.943'E
33	52°06.603'N 001°45.535'E
34	52°07.079'N 001°45.402'E
35	52°08.591'N 001°43.107'E
36	52°12.116'N 001°40.756'E
37	52°12.437'N 001°39.344'E
38	52°12.489'N 001°38.729'E
39	52°12.335'N 001°37.628'E
40	52°12.342'N 001°37.377'E
41	52°12.881'N 001°37.438'E
42	52°13.134'N 001°39.700'E
43	52°12.796'N 001°41.247'E
44	52°08.893'N 001°43.843'E
45	52°07.358'N 001°46.172'E
46	52°07.278'N 001°46.234'E
47	52°06.795'N 001°46.368'E
48	52°05.790'N 001°47.754'E
49	52°05.708'N 001°47.807'E
50	52°04.355'N 001°47.844'E
51	52°03.100'N 001°49.651'E
52	52°03.165'N 001°50.251'E
53	52°03.112'N 001°50.796'E
54	52°03.025'N 001°51.138'E
55	52°02.614'N 001°51.816'E
56	52°02.347'N 001°52.091'E
57	52°01.867'N 001°52.318'E
58	52°01.459'N 001°54.157'E
59	52°01.346'N 001°54.304'E
60	52°01.069'N 001°54.314'E
61	52°00.933'N 001°54.488'E

#### Galloper Project Boundary

*(continued)*

N°	Position
62	52°00.894'N 001°54.647'E
63	52°00.866'N 001°55.483'E
64	52°00.154'N 001°57.197'E
65	51°59.969'N 001°57.641'E
66	51°59.718'N 001°58.231'E
67	51°59.566'N 001°58.358'E
68	51°59.994'N 001°59.515'E
69	51°59.501'N 002°05.589'E
70	51°59.347'N 002°05.900'E
71	51°59.288'N 002°06.192'E
72	51°57.261'N 002°06.278'E
73	51°54.799'N 002°05.359'E
74	51°53.704'N 002°01.570'E
75	51°53.584'N 002°01.612'E
76	51°49.441'N 002°01.501'E
77	51°49.181'N 002°02.107'E
78	51°49.509'N 002°03.431'E
79	51°47.115'N 002°03.208'E
80	51°44.923'N 002°02.792'E
81	51°43.435'N 001°58.090'E

#### Buoyage

North Cardinal (V Q)	52°00.056'N 001°59.328'E
X Shaped (FI Y 5s)	51°59.809'N 002°02.757'E
North Cardinal (Q)	51°59.423'N 002°06.186'E
East Cardinal (Q (3) 10s)	51°57.261'N 002°06.278'E
South Cardinal (Q (6) + L FI 15s)	51°55.098'N 002°05.494'E
X Shaped (FI Y 5s)	51°54.503'N 002°04.136'E
South Cardinal (V Q (6) + L FI 10s)	51°53.898'N 002°02.022'E
North Cardinal (V Q)	51°49.433'N 002°03.422'E
East Cardinal (Q (3) 10s)	51°47.115'N 002°03.208'E
South Cardinal (Q (6) + L FI 15s)	51°44.797'N 002°02.768'E
X Shaped (FI Y 5s)	51°44.344'N 002°01.392'E
South Cardinal (V Q (6) + L FI 10s)	51°43.702'N 001°58.174'E
Guard Buoy North	51°57.383'N 002°06.612'E
West Gabbard 2 Smart Buoy	51°57.276'N 002°06.576'E
West Gabbard 2 Wave Buoy	51°57.168'N 002°06.546'E
Guard Buoy South	51°57.000'N 002°06.500'E