

Electronic Monitoring (EM)

Evidence of Compliance



marine scotland

Norman Fletcher EM coordinator

EM trials

2

Cod CQ 2011 – 2016

- All cod retained/landed/recorded
- LO (2016 Haddock/Plaice)

Pelagic 2013 -2015

- FDF fishery
- LO (2015)

Evidence - EM / Non EM

Landed catch composition

- size grades of cod landed
- BMS (LO)

Behavioural change

Pelagic – Fully documenting Fishery
Force majeure events
Survivability exemption



Discards - Low compliance levels

3

- High Grading
- Discards – not documented since day 1
- Landing obligation – discarding/slipping continues - Business as usual
Pelagic/demersal

Reason – poor control

- Control tools. Difficult to detect.
They do not change behaviour



Temporary change



EM

Continuous monitoring

Changes Behaviour

Evidence of Compliance

Level playing field

EM trials

4

Cod CQ trial 2011 -2016 (LO)

- Up to 27 vessels annually
- Knowledge of vessel (VMP)
- Risk areas
- Sensor – GPS/winch
- CCTV (7) – all fish handling areas
- 10% of annual hauls - Verified cod removals
- Cod measured in video -WT conversion - compared with elog (haul by haul)
- 3 continuous hauls (part box effect)
- Elog documentation - [main source data](#)
- Use EM to audit Elog documentation



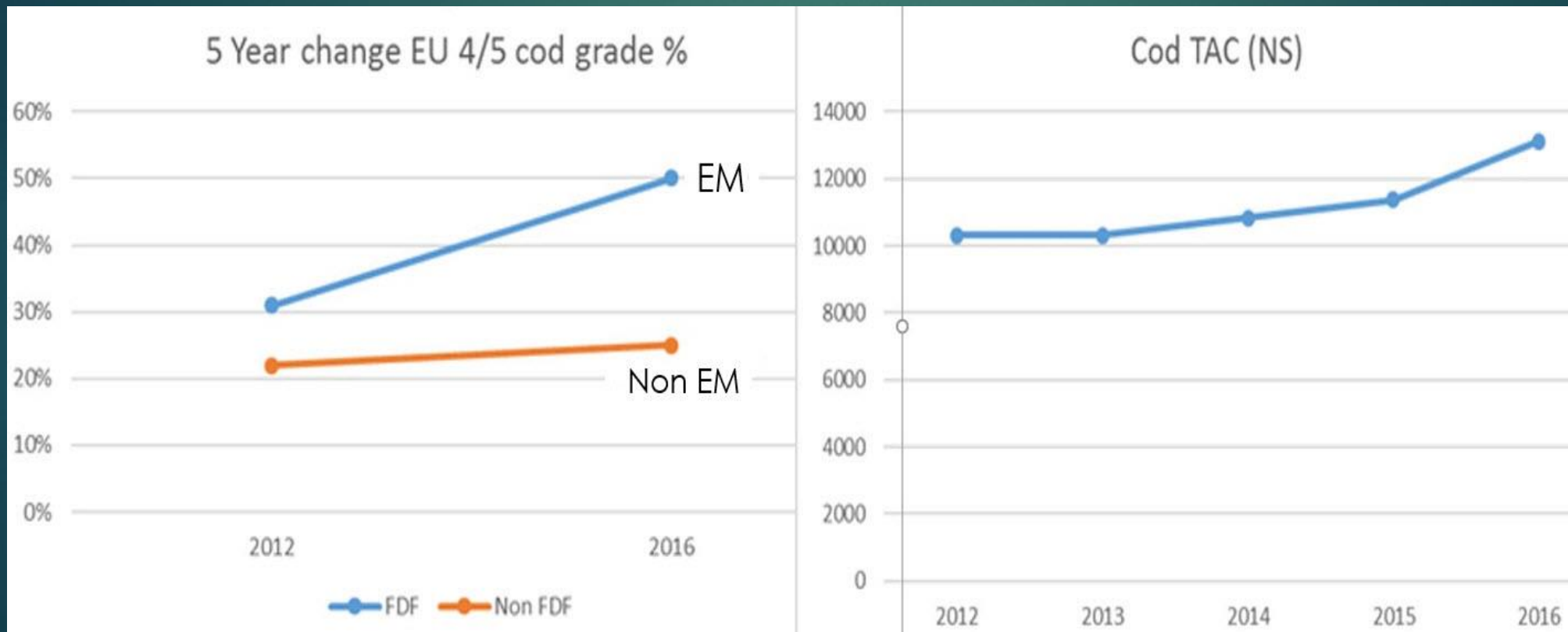
Catch composition (cod)

5

Evidence of compliance with EM

EU fish size grades landed (5 grades – 4 & 5 smallest)

High grading – discarding of lowest value part of catch



Similar results DK/Eng

Catch composition - BMS

6

2016 - LO - Below Minimum Size – BMS

Requirement to land and fully document

EM fleet 2016 – 14 vessels

- BMS Haddock/plaice documented – 115 tonnes = 700kg per trip

Non EM - Token gesture.

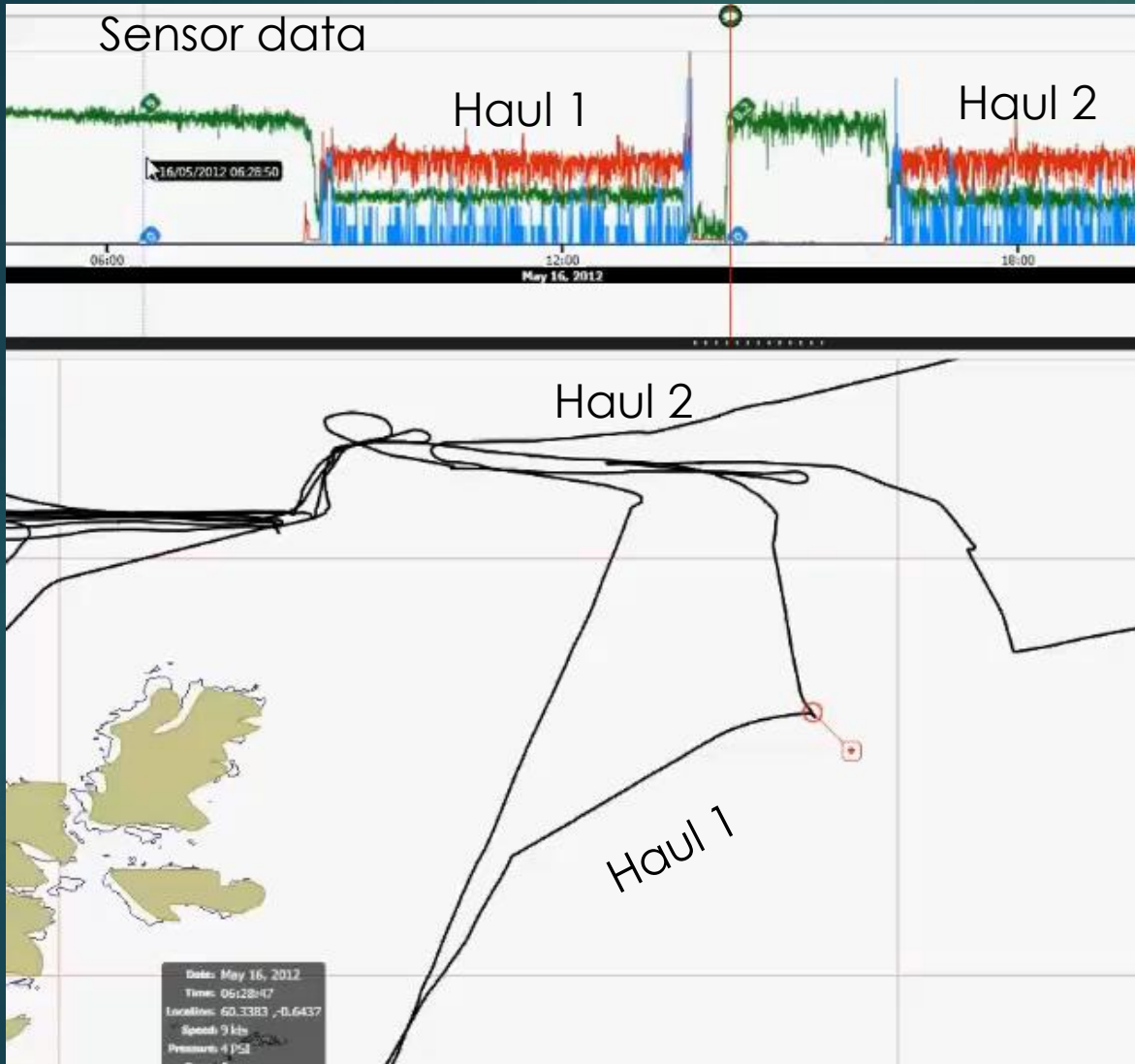
Even when plenty quota i.e. no choke

£2000 FPN for discarding Haddock/plaice using REM data

Without EM no detection



Behavioural change



Haul 1

Cod	1919 kg
Saithe	857
Ling	91
Pollock	47



Haul 2

Cod	164 KG
Monk	165
Ling	1368
Haddock	47
Hake	33

Cod CQ – LO for cod

Evidence of compliance

End of Cod CQ trial – EM removed

8

Reversal of behaviour

% EU Grade 4/5

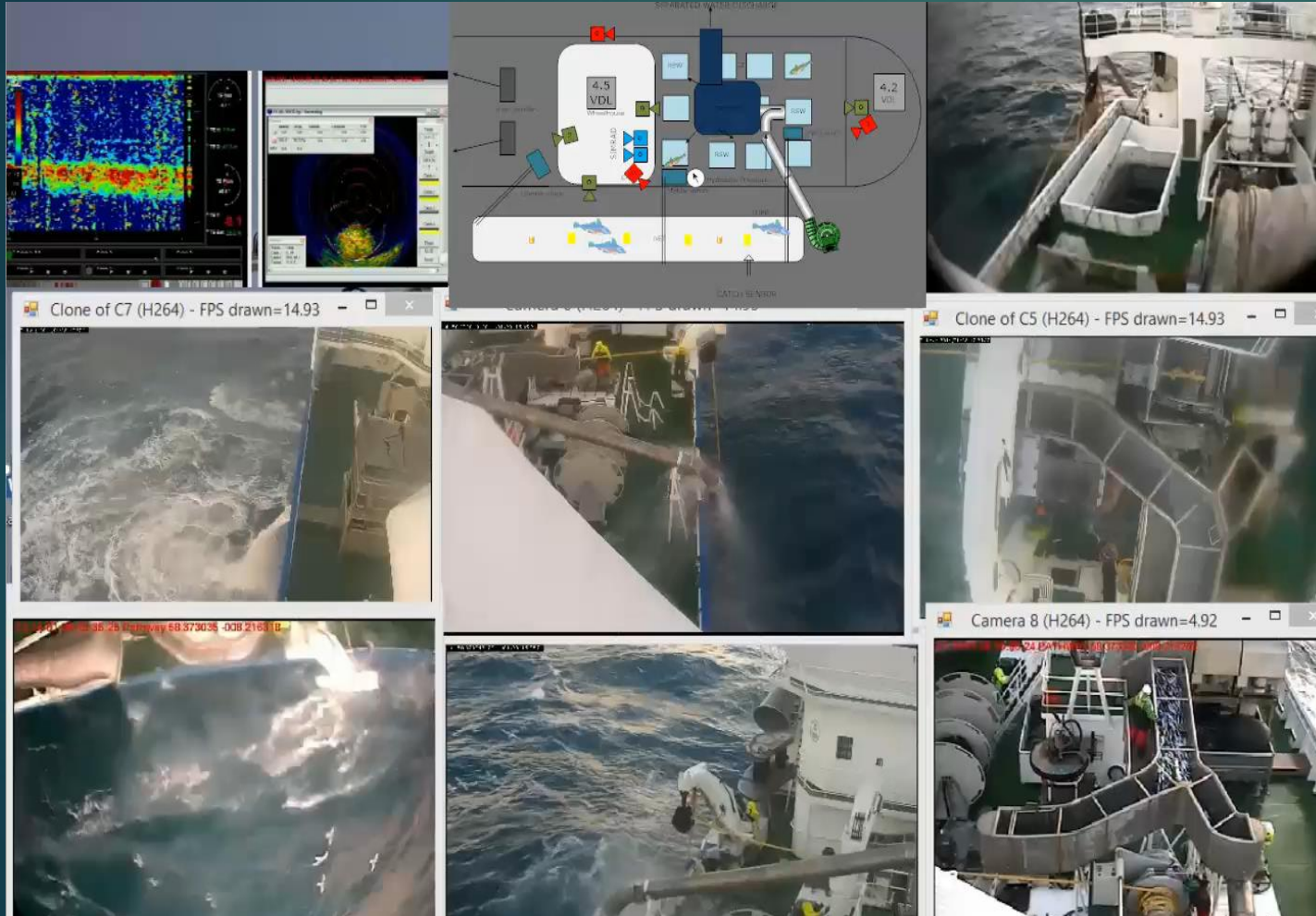
Vessel	2016 Q1	CCTV removed	LO cod 2017 Q1
1	53%	→	28%
2	63%	→	38%
3	51%	→	30%
4	50%	→	31%
5	40%	→	31%
6	53%	→	25%
7	31%	→	28%
8	67%	→	44%
9	70%	→	39%
10	51%	→	28%
11	30%	→	12%
12	49%	→	38%
Tonnes cod	413 t		480 t 16% increase



Evidence of Compliance
with EM

Pelagic trials EM

9



Aerial surveillance – evidence of substantial slipping/discarding

2 ½ year trial – Pathway PD 165

- EM - 7 cameras + net catch sensors
- High risk areas
- Catch sensor data
- Pump rates
- Flow rates to RSW tanks
- Verification of haul by haul
Documentation – Declared by RSW tank
- Gramme size data

Pelagic trial results – Mackerel (similar Herring)

10

2014(Q1) & 2015 (Q4)	Hauls Analysed	Elog (t)	Landed (t)	EM Analysis (t)
	65%	7073	7099	7347

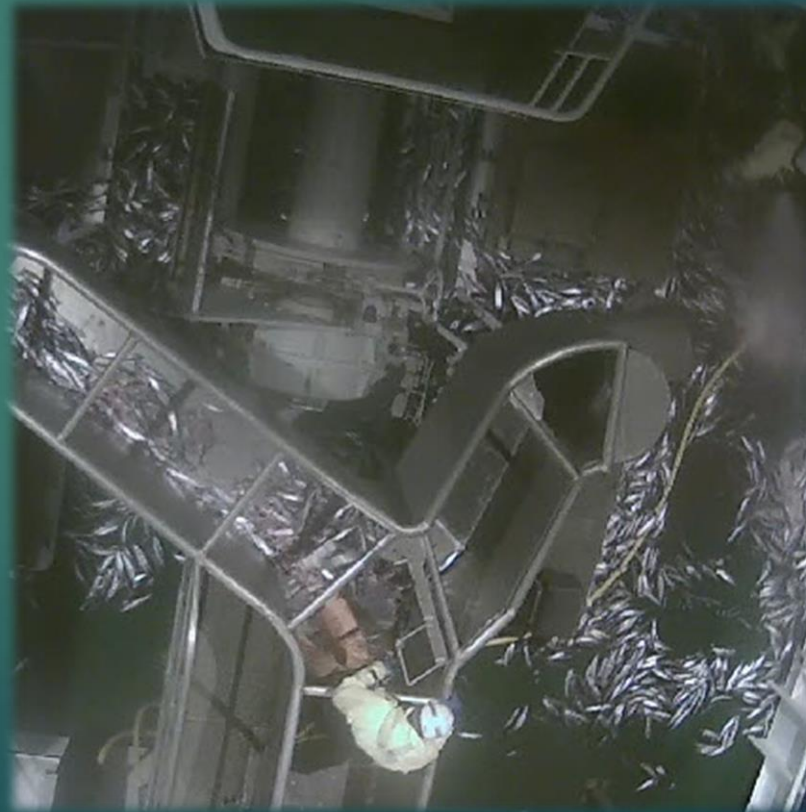
EM verification of removals

Within 4% of landed weight

Certified weigh scales

3 major Force majeure events

- EM helped verify skippers claims
- Avoid false accusation



Pelagic EM trial

11

Purse seine – using EM to verify survivability exemption of Mackerel & Herring



EM

- verifies Point of no Return
- verifies catch taken on board
- enforces LO

Without EM/Observer - impossible

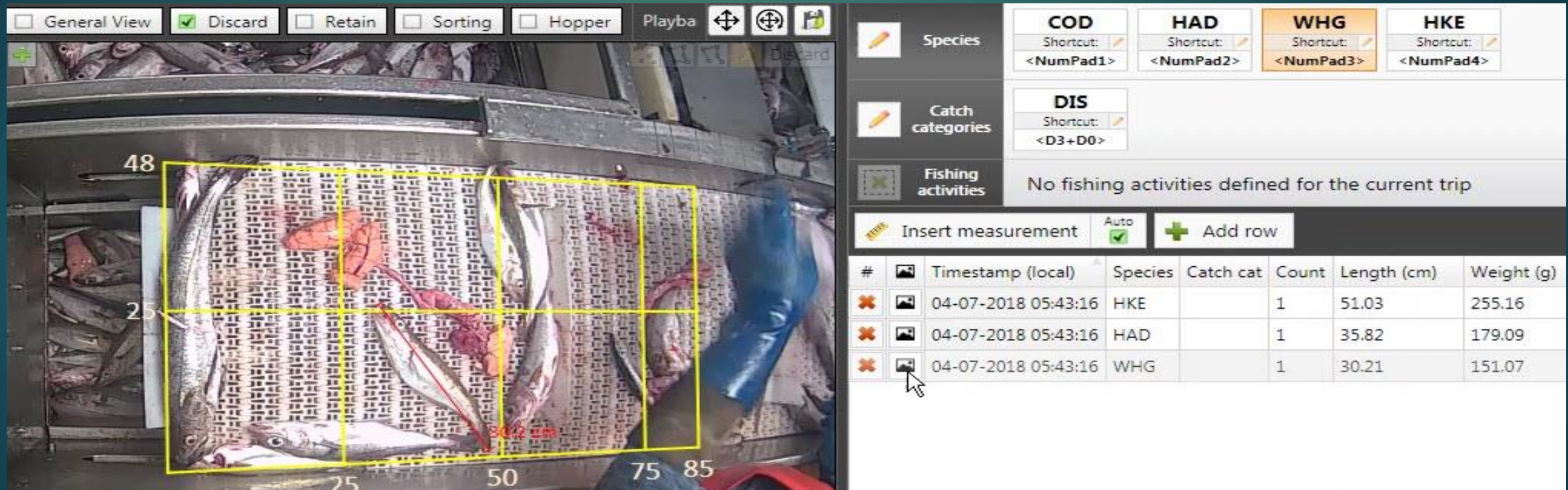
EM – Current & Future developments

12

Data transmission – 4/5 G & Satellite

- Remote monitoring from a desktop (scot 43 vessels – scallop & Razor)

Measuring tool – quantify retained/discard + Annotation



The screenshot displays the EM software interface. On the left, a video feed shows fish in a sorting bin. A yellow rectangular box highlights a specific fish, with a red dimension line indicating a length of 30.2 cm. The interface includes a top toolbar with buttons for 'General View', 'Discard' (checked), 'Retain', 'Sorting', 'Hopper', and 'Playba'. On the right, there are sections for 'Species' (COD, HAD, WHG, HKE), 'Catch categories' (DIS), and 'Fishing activities' (No fishing activities defined for the current trip). Below these is a table with columns for '#', 'Timestamp (local)', 'Species', 'Catch cat', 'Count', 'Length (cm)', and 'Weight (g)'. The table contains three rows of data for HKE, HAD, and WHG species, all recorded on 04-07-2018 at 05:43:16.

#	Timestamp (local)	Species	Catch cat	Count	Length (cm)	Weight (g)
✖	04-07-2018 05:43:16	HKE		1	51.03	255.16
✖	04-07-2018 05:43:16	HAD		1	35.82	179.09
✖	04-07-2018 05:43:16	WHG		1	30.21	151.07

Machine learning – reduced analysis/increased verification

13



Reducing cost

£3k for CCTV system

Proportionate / appropriate inshore fisheries

Summarise



14

Landing obligation/discard ban

EM - Strong evidence delivers compliance

EM brings about Behavioural change – better decisions



- Where, when to fish
- Net construction. Selectivity
- Time of day, month, year
- Light or dark
- Hard or soft
- Quota availability
- Price

Trials LO – Scot 2016 and England 2016 -2018 – High level compliance

What's ahead?

EFCA REM TWG



15

Document defining technical requirements /procedures (LO objective)

EFCA board → RWG's → Control Reg. Several years away.

Chance for industry to shape REM

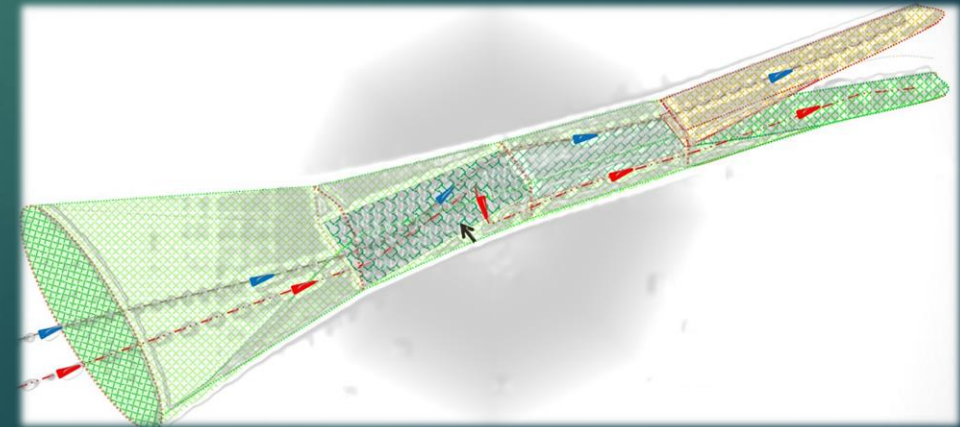
Fisherman not policy

Develop our own rules and standards
e.g. Flexibility BMS discards. Accountability.

Ensure deliver compliance + Level playing field

Science (data collection tool)

REM to prove results in selectivity trials...can these nets deliver



Questions?

16

