

# Advances in Seine net fishing 1965-2008

Leslie Tait  
NAFC Marine Centre

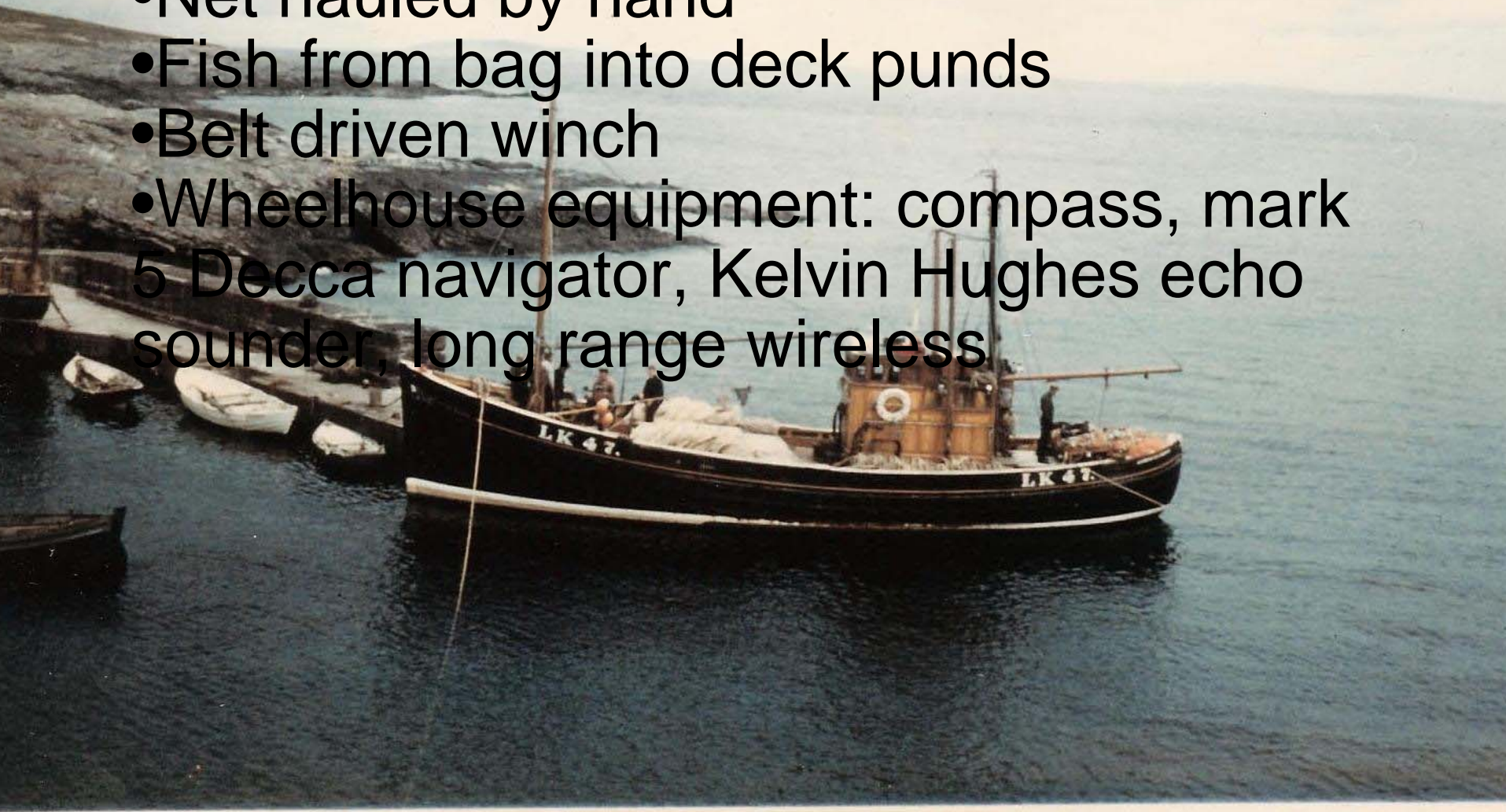
Full time fisherman 34 years

Skipper/owner 22 years

Prosecuting mainly seine net fishing

## Brighter Dawn LK 47 1965

- Ropes on open deck
- Net hauled by hand
- Fish from bag into deck puns
- Belt driven winch
- Wheelhouse equipment: compass, mark 5 Decca navigator, Kelvin Hughes echo sounder, long range wireless





**Typical belt driven winch hauling manila ropes  
Late 1960's**



**Typical Scottish seine netter (1970's)**



**Hauling by power block (early to mid 1970's)**

Advancement to rope bins (late 1970's)





**Advancement to rope reels (late 1970's)**



**Catch handling system!**

**WE HAVE COME A LONG WAY  
BUT THE BASIC PRINCIPLES OF  
OPERATION HAVE NOT  
CHANGED**

# Radiant Star LK 71 2008



Pre-determined  
seine net tow  
highlighted on  
GPS chart  
plotter

0.0  
200.  
CRS 31  
SPD  
RTE NO  
XTE  
RNG  
CTS  
NEW C  
TTG  
ETA  
DEPTH  
- G  
- G  
-- MA  
EVENT  
□ TRAC  
◇ TRAC  
A  
B  
C  
D  
MENU  
1 : 3  
NO

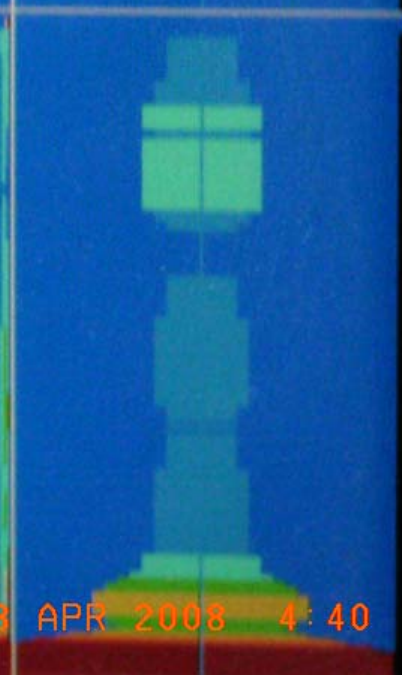
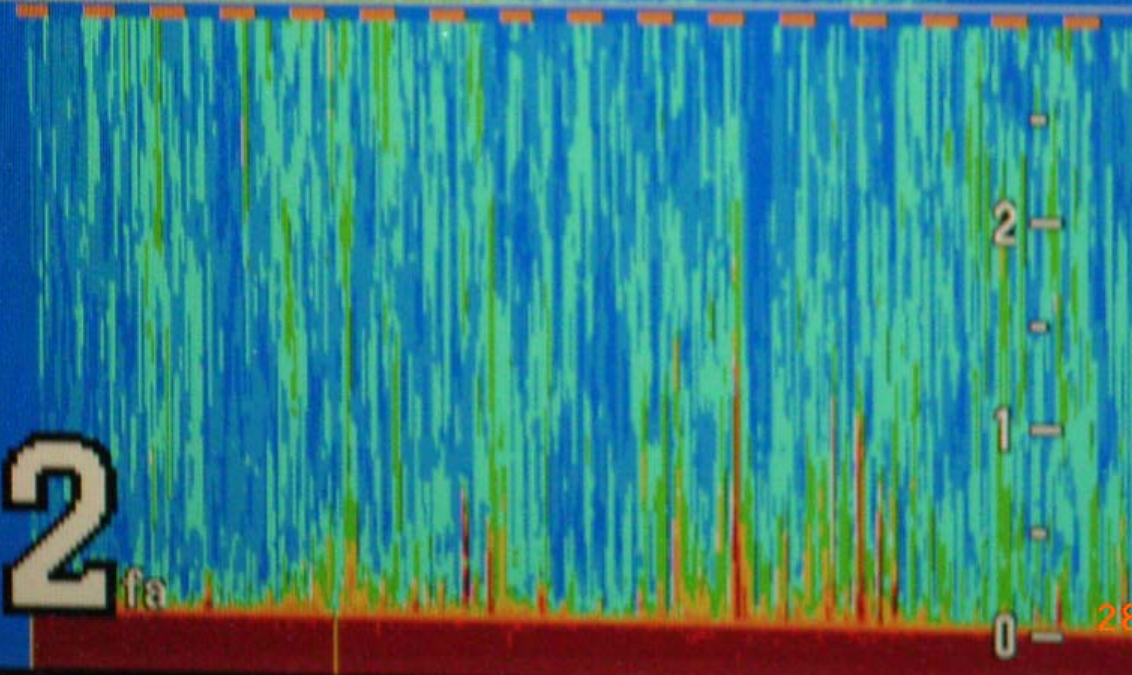
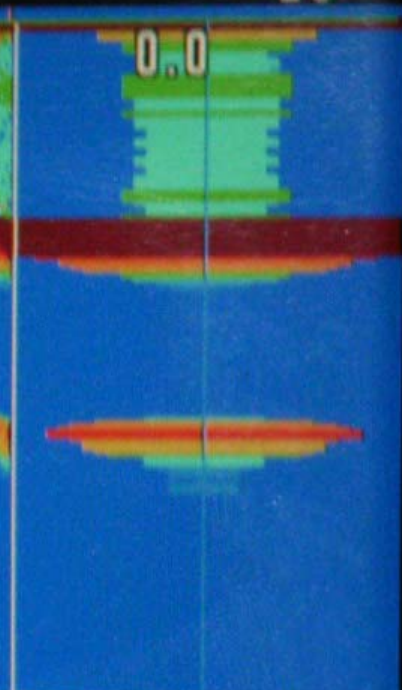
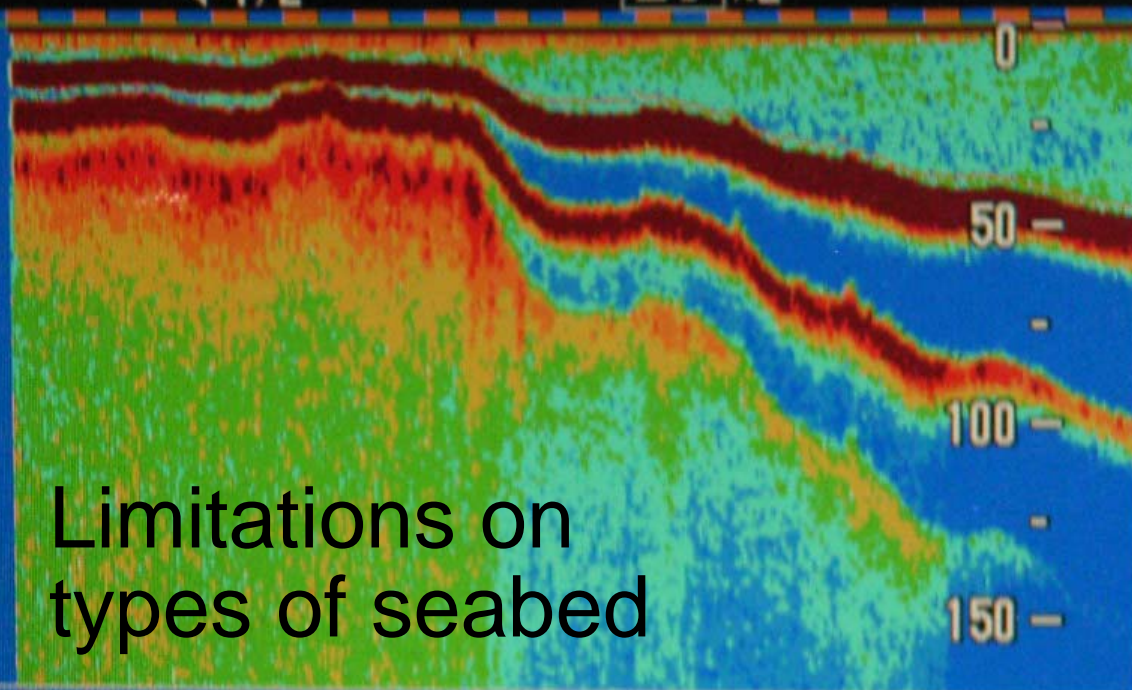
28 APR 2008 5:30

28 APR 2008 5:30

←1/2

LF N2

0



49.2

fa

28 APR 2008 4:40



EASE OF HAULING  
ESPECIALY IN POOR  
WEATHER

28 APR 2008

DIRECT PULL ONTO REELS  
REDUCED WEAR AND TEAR  
ON ROPES

STBWINCH

28 APR 2008 5:19

LIVE FRESH CATCH  
SOAK TIME UNDER 1  
HOUR



GUTTING AND  
SELECTING  
THE CATCH



FIRM SHINY FISH  
REQUIRE CAREFULL  
WASHING FOR LONG  
SHELF LIFE



28 APR 2008 9:21

FUEL RESET



FUEL  
EFFICENCY

28 APR 2008 5:19

- Fuel usage 50% lower than comparable trawler.
- Very effective for low horsepower vessels
- Less engine wear due to lower output demands.
- High quality of catch.
- Relatively low gear costs.
- Minimal damage to seabed.

- Demersal fishery built on seine net through 60's, 70's and early 80's.
- 40 vessels capable of prosecuting fishery in 1983.
- Only 4 vessels remaining by 2001 (before large scale decommissioning in 2002).
- Resulted in loss of experience and expertise of this type of fishery.

## WHAT CONTRIBUTED TO THE DEMISE OF THE FLEET?

- Low price of fuel?
- Quotas, the need to diversify to other high value species e.g. Monkfish?
- Mesh size? Larger mesh size pushing vessels to increased horsepower to counter effect of losing traditional fisheries?

- Seine net technology has advanced dramatically over the past 40 years.
- Current trends in fuel prices and demands for a high quality product may pave the way for a resurgence in this type of fishery.
- However, under the current quota regime we require a diverse fleet to fully utilise quota allocations.



Thanks for your attention.  
Any Questions?