



## Workers' well-being: occupational health, safety and welfare

01 February 2023, 14:00 - 16:00, Online





GLOBALG.A.P.

# THE GLOBALG.A.P. AQUACULTURE STANDARD



COMPOUND



HATCHERY



GROW-OUT



HARVEST



POST-HARVEST

GLOBALG.A.P. Compound Feed  
Manufacturing Standard

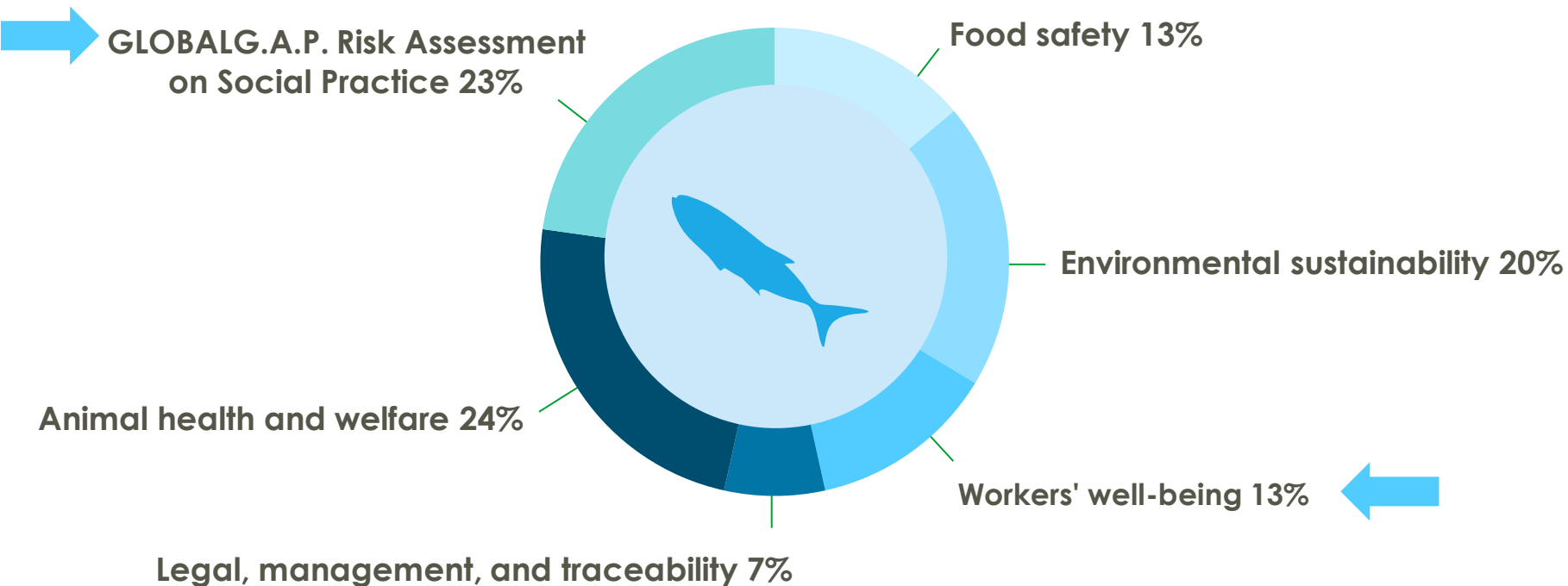
GLOBALG.A.P.  
Aquaculture Standard

SUPPORTING THE AQUACULTURE SECTOR SINCE 2004



# IFA V6 FOR AQUACULTURE STANDARD CONTENT

Principles and criteria (\*)



\*Excluding postharvest section AQ 28



## IFA V6 / Section AQ 4

### WORKERS' WELL-BEING: OCCUPATIONAL HEALTH, SAFETY, AND WELFARE

---

#### Workers' occupational health and safety

- **Risk assessment** for workers' health and safety (incl. zoonosis)
- Health and safety **procedures** (incl. all vessels)
- **Diving operations** requirements expanded
- Access to **clean toilets**, food storage areas, designated eating and rest areas, handwashing facilities, and drinking water

#### Personal protective equipment

- Workers, visitors, and subcontractors are equipped with suitable personal protective equipment (PPE)

#### Workers' hazards and first aid

- Accident and emergency procedures/Warning signs identify all potential hazards, emergency exits, and escape routes/ First aid kits and trained staff



## IFA V6 / Section AQ 4

### WORKERS' WELL-BEING: OCCUPATIONAL HEALTH, SAFETY, AND WELFARE

---

#### Training and assigned responsibilities

- Health and safety **training**
- **Hygiene** training
- **Aquatic species welfare training** extended to include workers at all stages of production

#### Workers' Welfare

- responsible for the workers' health, safety, and welfare
- On-site living quarters
- **GLOBALG.A.P. Risk Assessment on Social Practice (GRASP)** continues to be a compulsory part of the IFA requirements for aquaculture with GRASP v2

#### Outsourced activities (subcontractors)

- Outsourced activities shall comply with the principles in the standard



# GRASP V2

A farm-level social/labor management tool for global supply chains, to be used in combination with Integrated Farm Assurance (IFA)

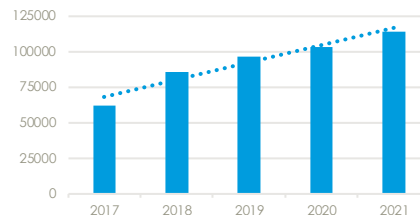




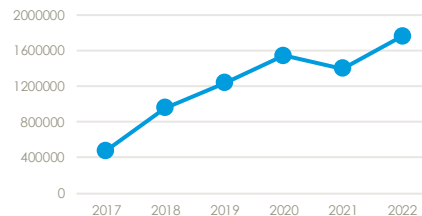
# GLOBALG.A.P. RISK ASSESSMENT ON SOCIAL PRACTICE

GRASP – The most widely used GLOBALG.A.P. add-on

- **Social/labor management tool** for monitoring risks in global supply chains
- **Assures social responsibility** practices at farm level
- Supports companies to fulfil **due diligence obligations**
- Practical system for all types of IFA certified farms- **including smallholders and family farms**
- Covers the main topics of the UN Guiding Principles on Business and Human Rights and the **International Labour Organization (ILO)**'s core labor conventions



**113,929 producers**



**1.75 million workers**



## HOW IT WORKS

Four key topics, 13 +1 subtopics

NEW V2



### WORKERS' VOICE

- **Right of association and representation**
- Worker representation
- Complaint process



### HUMAN AND LABOR RIGHTS INFORMATION

- Producer's human rights policies
- Access to labor regulation information
- **Disciplinary procedures**



### HUMAN AND LABOR RIGHTS INDICATORS

- Terms of employment documents
- Payments
- Wages
- Time recording system and working hours
- **Forced labor indicators**



### CHILD AND YOUNG WORKERS PROTECTION

- Working age, child labor, and young workers
- Compulsory school age and school access

- + Verification of the quality management system
- + Robust and improved verification methods, including interviews





# NEW IN GRASP V2

## Assessment results

### GRASP V2

**64** Principles and criteria to be assessed

**NEW!**  Principles and criteria classified as either Major Musts or Minor Musts


**NEW!**  Assessment result: compliant or non-compliant

**NEW!**  includes verification methods for subcontractors

### GRASP V1

**54** Control points and compliance criteria to be assessed

 All control points and compliance criteria are weighted the same

 Four different assessment results (compliance levels)

**GRASP is compulsory for aquaculture**



# THE BENEFITS OF GRASP

For the supply chain

- Helps identify **social risks** and the necessary corrective actions in supply chains
- **Improves transparency** and risk monitoring in the supply chain
- Covers the **whole production process** under GLOBALG.A.P. IFA certification
- **Applies globally** to all GLOBALG.A.P. scopes
- **Eases the audit burden** for suppliers while upholding corporate social responsibility pledges





# COMPOUND FEED MANUFACTURING STANDARD

Version 3 released 15 December 2021

## GlobalGAP tightens feed standard rules



Feed manufacturers certified under the GlobalGAP standard will have to meet stricter criteria for fishmeal, fish oil and soy if they want to keep the certification.

Source: Fishfarmingexpert



# COMPOUND FEED MANUFACTURING STANDARD

Version 3 released 15 December 2021

## Main changes

- Sustainability of feed production
- ➔ • Workers' health, safety, and welfare
- Responsible sourcing of raw materials:
  - Sourcing of fish meal and fish oil*
  - FEFAC soy sourcing guidelines*
  - Palm oil products*

### GlobalGAP tightens feed standard rules



Feed manufacturers certified under the GlobalGAP standard will have to meet stricter criteria for fishmeal, fish oil and soy if they want to keep the certification.



# GLOBALG.A.P. Aquaculture certification

## Certified volume

- Active in 28 countries
- Certified volume: 2,75 million mt
  - 1,98 million mt – Atlantic Salmon
- Main species:
  - Atlantic Salmon
  - Rainbow Trout
  - Whiteleg Shrimp
  - European Seabass
  - Gilthead Seabream
  - Coho Salmon



Updated 31 March 2022



# 37 SPECIES FROM CERTIFIED PRODUCTION

## 32 FINFISH SPECIES AVAILABLE FROM CERTIFIED PRODUCTION<sup>(1)</sup>

Adriatic Sturgeon .....	[ <i>Acipenser naccarii</i> ]	Meagre .....	[ <i>Argyrosomus regius</i> ]
Arctic Char .....	[ <i>Salvelinus alpinus</i> ]	Pangasius Tra .....	[ <i>Pangasianodon hypophthalmus</i> ]
Asian Bronze Featherback .....	[ <i>Notopterus notopterus</i> ]	Pink Dentex .....	[ <i>Dentex gibbosus</i> ]
Atlantic Cod .....	[ <i>Gadus morhua</i> ]	Rainbow Trout .....	[ <i>Oncorhynchus mykiss</i> ]
Atlantic Halibut .....	[ <i>Hippoglossus hippoglossus</i> ]	Red Drum .....	[ <i>Sciaenops ocellatus</i> ]
Atlantic Salmon .....	[ <i>Salmo salar</i> ]	Red Porgy .....	[ <i>Pagrus pagrus</i> ]
Barramundi .....	[ <i>Lates calcarifer</i> ]	Red Seabream .....	[ <i>Pagrus major</i> ]
Bluespotted Seabream .....	[ <i>Pagrus caeruleostictus</i> ]	Russian Sturgeon .....	[ <i>Acipenser gueldenstaedtii</i> ]
Brook Trout .....	[ <i>Salvelinus fontinalis</i> ]	Senegalese Sole .....	[ <i>Solea senegalensis</i> ]
Brown Trout .....	[ <i>Salmo trutta</i> ]	Sharpsnout Seabream .....	[ <i>Diplodus puntazzo</i> ]
Cobia .....	[ <i>Rachycentron canadum</i> ]	Shi Drum .....	[ <i>Umbrina cirrosa</i> ]
Coho Salmon .....	[ <i>Oncorhynchus kisutch</i> ]	Starry Sturgeon .....	[ <i>Acipenser stellatus</i> ]
Common Dentex .....	[ <i>Dentex dentex</i> ]	Sterlet Sturgeon .....	[ <i>Acipenser ruthenus</i> ]
European Seabass .....	[ <i>Dicentrarchus labrax</i> ]	Turbot .....	[ <i>Scophthalmus maximus</i> ]
Gillthead Seabream .....	[ <i>Sparus aurata</i> ]	White Grouper .....	[ <i>Epinephelus aeneus</i> ]
Greater Amberjack .....	[ <i>Seriola dumerili</i> ]	Yellowtail Kingfish .....	[ <i>Seriola lalandi</i> ]

## 5 CRUSTACEANS & MOLLUSCS SPECIES AVAILABLE FROM CERTIFIED PRODUCTION<sup>(1)</sup>

Blue Mussel .....	[ <i>Mytilus edulis</i> ]	Giant Tiger Prawn .....	[ <i>Penaeus monodon</i> ]
Pacific Cupped Oyster .....	[ <i>Crassostrea gigas</i> ]	Whiteleg Shrimp .....	[ <i>Litopenaeus vannamei</i> ]
Mediterranean Mussel .....	[ <i>Mytilus galloprovincialis</i> ]		

New species added in the last two years:

- Arctic char
- Atlantic cod
- Flathead grey mullet
- Hybrid striped bass
- South African abalone
- Nile tilapia





# GLOBALG.A.P. CERTIFICATION FOR AQUACULTURE

Seaweed (macroalgae) added to product scope



Available for:

- Finfish
- Crustaceans
- Molluscs
- **NEW: seaweed (macroalgae)**

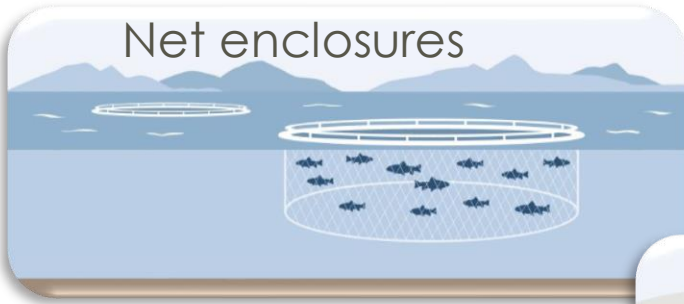




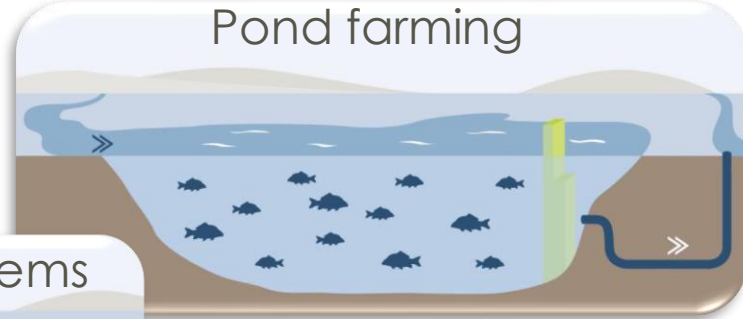
# GLOBAL A.P. CERTIFICATION FOR AQUACULTURE

Available for all types of production systems

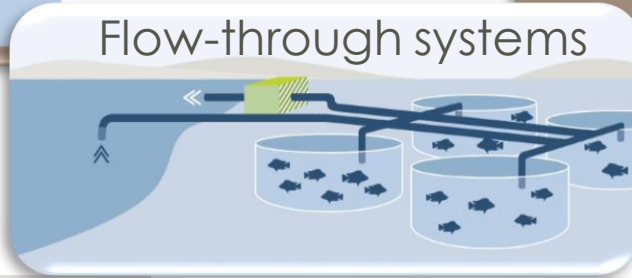
Net enclosures



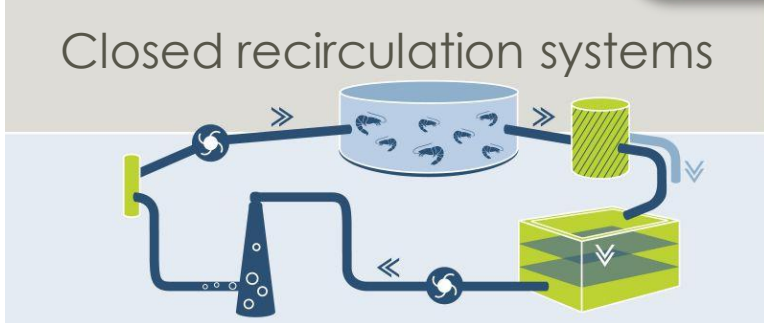
Pond farming



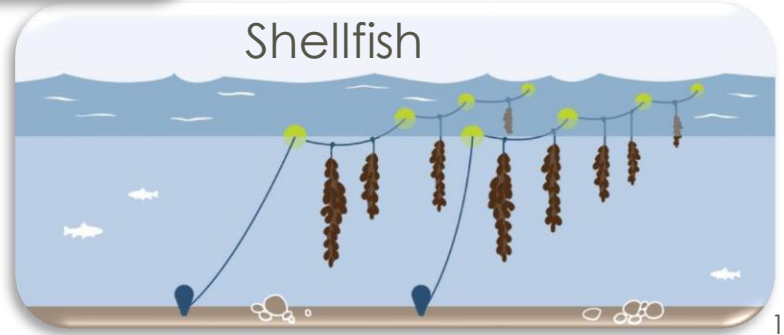
Flow-through systems



Closed recirculation systems



Shellfish







**GLOBAL G.A.P.**  
The Global Partnership for Safe and Sustainable Agriculture

## The GGN Label for Aquaculture

All you need to know  
about...





# The GGN label

## GGN label as cross-category label

**The GGN label stands for certified, responsible farming and transparency.**

Applicable for fruits, vegetables, flowers, plants and farmed seafood





# The GGN label

## Available in countries





# The GGN label Making certified, responsible farming visible



## Algal oil-fed salmon to hit German shelves this week



Kaufland's packaging highlights the salmon's algal oil input. Photo: Veramaris.





## The GGN label

### Making certified, responsible farming visible







# The GGN label

## Making certified, responsible farming visible

- The GGN label is the ideal solution for communicating to consumers your commitment to GLOBALG.A.P.
- GGN labeled products are available at:





# THANK YOU FOR YOUR ATTENTION!



**Remko Oosterveld**

GGN Label Aquaculture

Key Account Manager



[oosterveld@globalgap.org](mailto:oosterveld@globalgap.org)



+49 (0) 151 6886 1819

[www.globalgap.org](http://www.globalgap.org)



**GLOBALG.A.P.**

**Disclaimer:** This presentation, training material, or publication is the property of GLOBALG.A.P. c/o FoodPLUS GmbH. The GLOBALG.A.P. approved certification body or Registered Trainer may use it and its contents in internal and external trainings in unaltered form. GLOBALG.A.P. does not assume any responsibility for the training carried out by third parties using this material.

© GLOBALG.A.P. Secretariat