



UK Fishing Restrictions

From Kingfisher

Matt Frow

Kingfisher Information Manager, Seafish.

Presentation to: The Fisheries Management and Innovation Group (FMIG)

29 September 2022

The Kingfisher team

- Kingfisher is a team within Seafish
- Formally Kingfisher Charts Ltd & founded by Tess Johnson – a former fisherman – in 1960s
- Working with fishers for over 60 years
- Over the past 20 years, predominantly focussing on delivering fishing safety services

UK Fishing Restrictions Project

1. Project Summary
2. UK Fishing Restriction Data Collection
3. Fishing Plotters
4. Website Functionality
5. Future of the Service



Project Summary

What's the Problem?

- Understanding fishing restrictions in UK waters is highly complex
- Overlapping areas of restrictions from various legislative bodies to navigate
- MPAs do not directly correlate with fishing restrictions

390

Marine Protected Areas

>1000

Fishing Restrictions

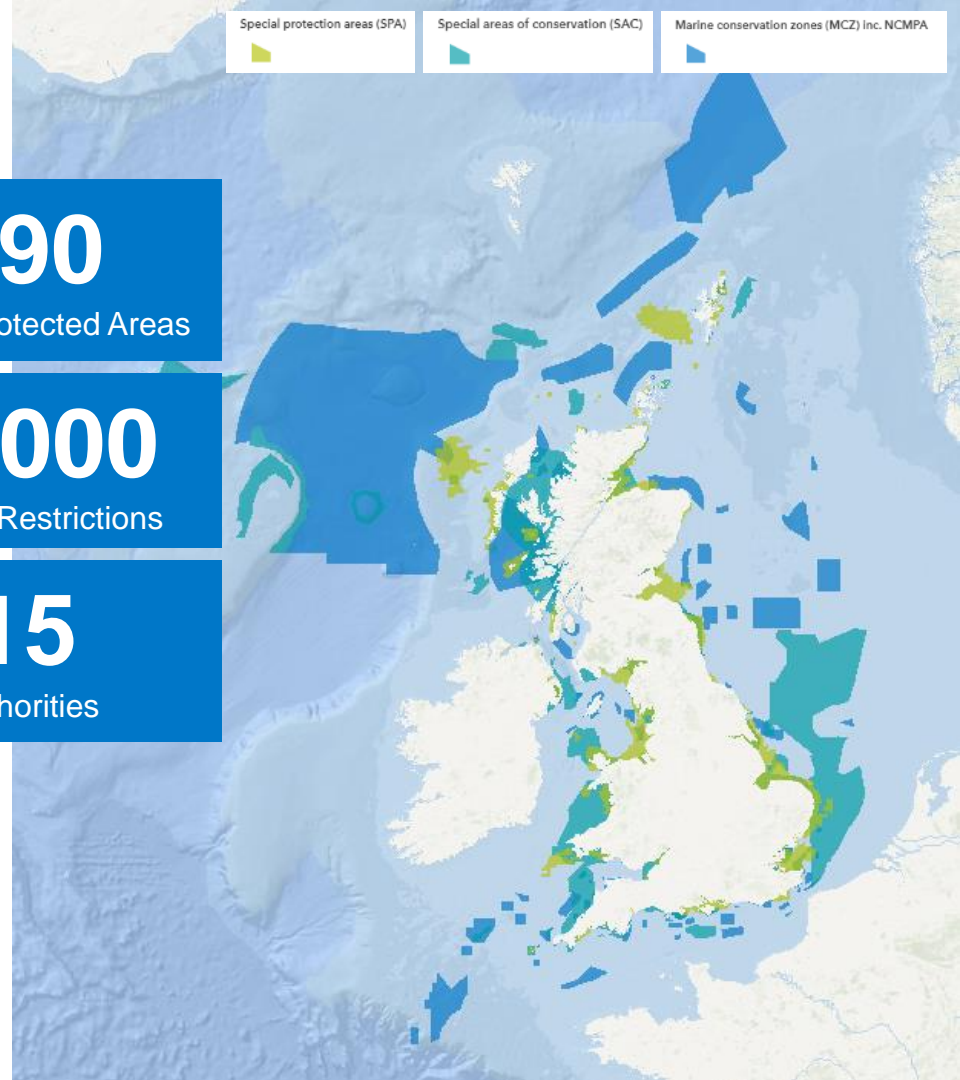
15

Authorities

Special protection areas (SPA)

Special areas of conservation (SAC)

Marine conservation zones (MCZ) inc. NCMPA



What's the Problem?

- Understanding fishing restrictions in UK waters is highly complex
- Overlapping areas of restrictions from various legislative bodies to navigate
- MPAs do not directly correlate with fishing restrictions

390

Marine Protected Areas

>1000

Fishing Restrictions

15

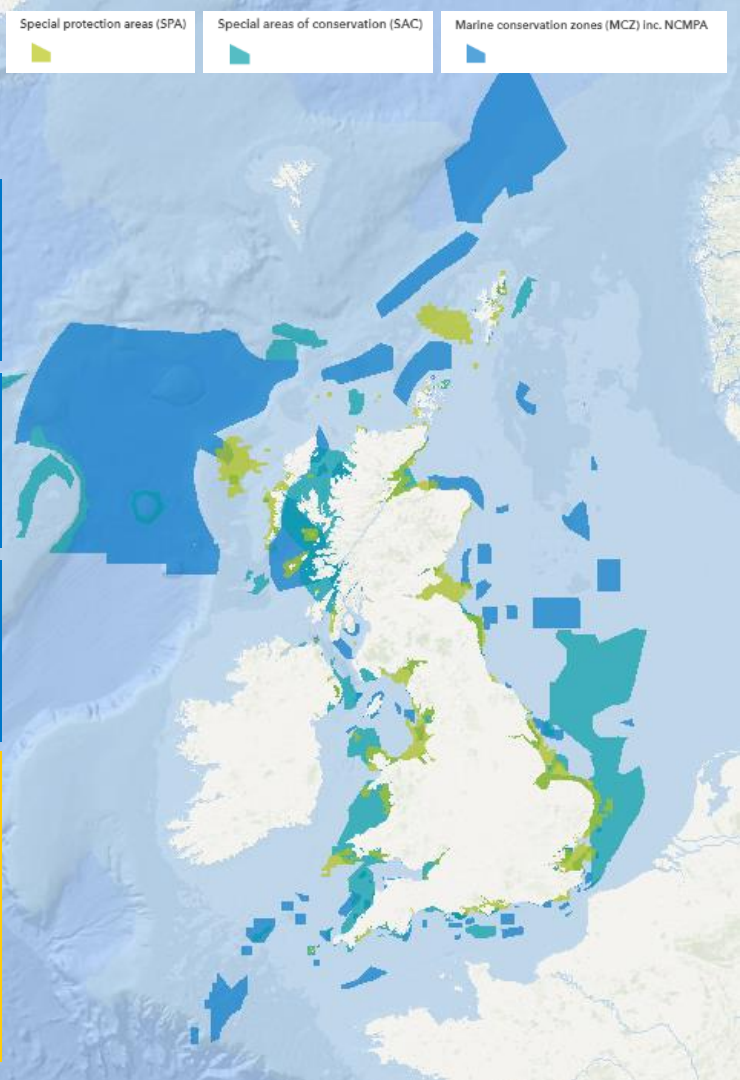
Authorities

There is no **consolidated spatial dataset** detailing **all fishing restrictions** for UK waters in a format which is **easy to understand** and can be used on multiple plotter systems. This makes **compliance** with the law very difficult.

Special protection areas (SPA)

Special areas of conservation (SAC)

Marine conservation zones (MCZ) inc. NCMPA



What did fishers say?

- “Too many websites with **information buried too deeply**”
- “**Just can’t find it**, it’s usually buried in **100's of pages of lawyer speak**”
- “A **one-stop-shop** [is needed] ... with **restrictions in layman terms**”
- “[Regulator] **websites are a mine field to get round** and find what you need”
- “**I find it difficult** as I have to go through all the restrictions **to see which ones apply to me**”
- “About time this was done! **Long overdue.**”

Scope and Approach

Fishing Restriction Mapping Project

Aims to address the problem of complex unmapped UK fishing restrictions by offering a consolidated UK wide dataset of all fishing gear restrictions

Our Approach

Focus on providing a simplified gear focussed view of all current commercial fishing restrictions in UK waters in a format which is easy to understand and can be used with confidence

Project Deliverables

A mobile friendly website with an interactive map, and fishing plotter datasets distributed via USB and available to download

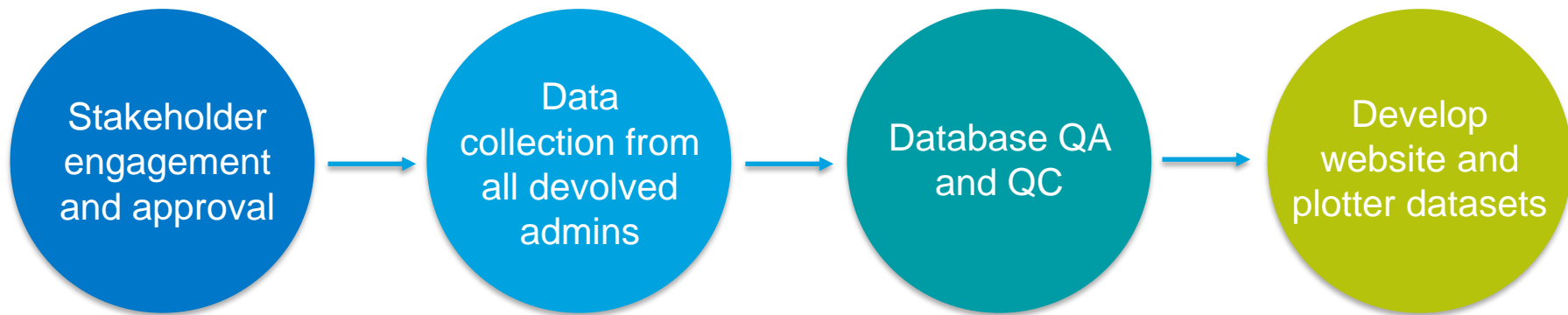
Fully Funded

Initial phase was fully funded by the EMFF and MMO

Project Aims

- Location of all fishing restrictions
- Facilitate compliance with regulations
- Promote sustainable fishing practices

Answer the question
“Can I fish here?”



Data Collection



Fishing Restrictions Data

INITIAL ESTIMATES

- Project planning estimated 120 restrictions
- However, there are > 1000 restrictions

DIFFICULT TO COLLATE

- Various authorities using different data formats and schemas
- Not all restrictions had been mapped in GIS
- Data not ready to use with plotters

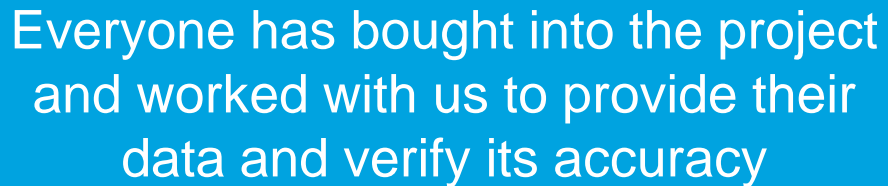
COMPLEX

- Overlapping byelaws
- Legal-ese difficult to interpret
- Seasonality, vessel sizes, and gear specifics

Data Update

All marine regulatory authorities within the EEZ have contributed their data:

- Marine Scotland
- MMO
- DAERA
- Welsh Government
- Isle of Man Government
- All 10x IFCAs

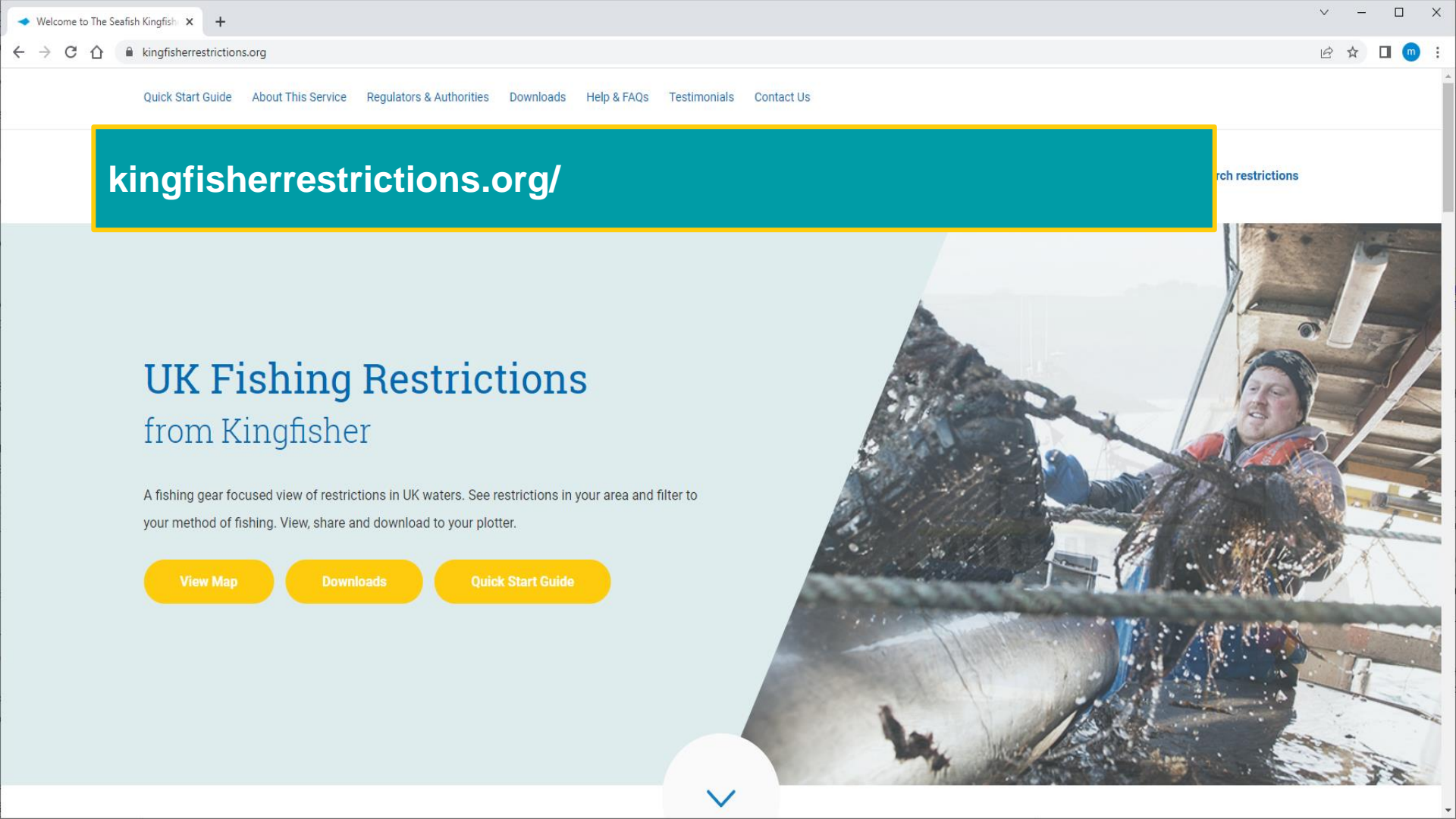


Everyone has bought into the project
and worked with us to provide their
data and verify its accuracy

Website: KingfisherRestrictions.org

Website demonstration

1. Homepage
2. Quick filters
3. Advanced filters
4. Interactive map and pop-ups
5. Options to print, share and download
6. Plotter downloads
7. Other pages – Guide, FAQs, Regulators



kingfisherrestrictions.org/

UK Fishing Restrictions from Kingfisher

A fishing gear focused view of restrictions in UK waters. See restrictions in your area and filter to your method of fishing. View, share and download to your plotter.

View Map

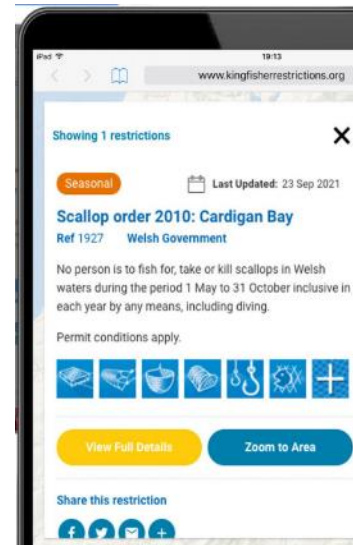
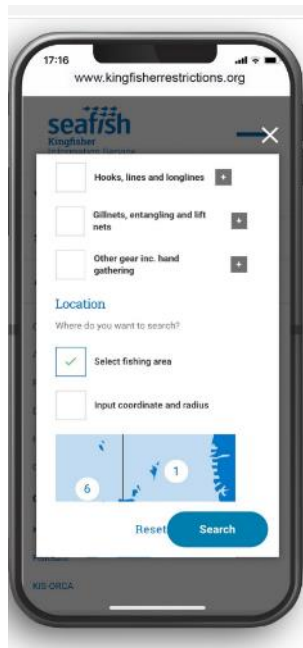
Downloads

Quick Start Guide

Search restrictions



kingfisherrestrictions.org/quick-start-guide



kingfisherrestrictions.org/about-us

At present commercial fishers face great practical difficulties in finding, interpreting and plotting complex rules and regulations from multiple sources.

This service aims to provide a consolidated and simplified **gear focused** view of all current **commercial fishing restrictions** in UK waters in a format which is easy to understand and can be used with confidence. In making this available to fishers it will help increase awareness of prohibited and permissible fishing operations, **both inshore and offshore**, and promote compliance with regulations as well as sustainable fishing practices. All gear restrictions have been categorised according to [FAO fishing gear nomenclature](#) and can be queried in the interactive map, downloaded for offline use, and viewed on fishing plotters.

This service includes restrictions that:

- ✓ Relate to type of fishing gear
- ✓ Relate to commercial fishing
- ✓ Are legislative (legally enforceable)
- ✓ Are within the sea i.e. submerged at Mean High Water Springs (MHWS) and within the Normal Tidal Limit (NTL)

This service does not include:

- ✗ Species restrictions e.g. minimum size
- ✗ Catch limitations
- ✗ Temporary, Advisory or Emergency restrictions
- ✗ Recreational restrictions
- ✗ Mesh size or engine power limits where no other restriction applies

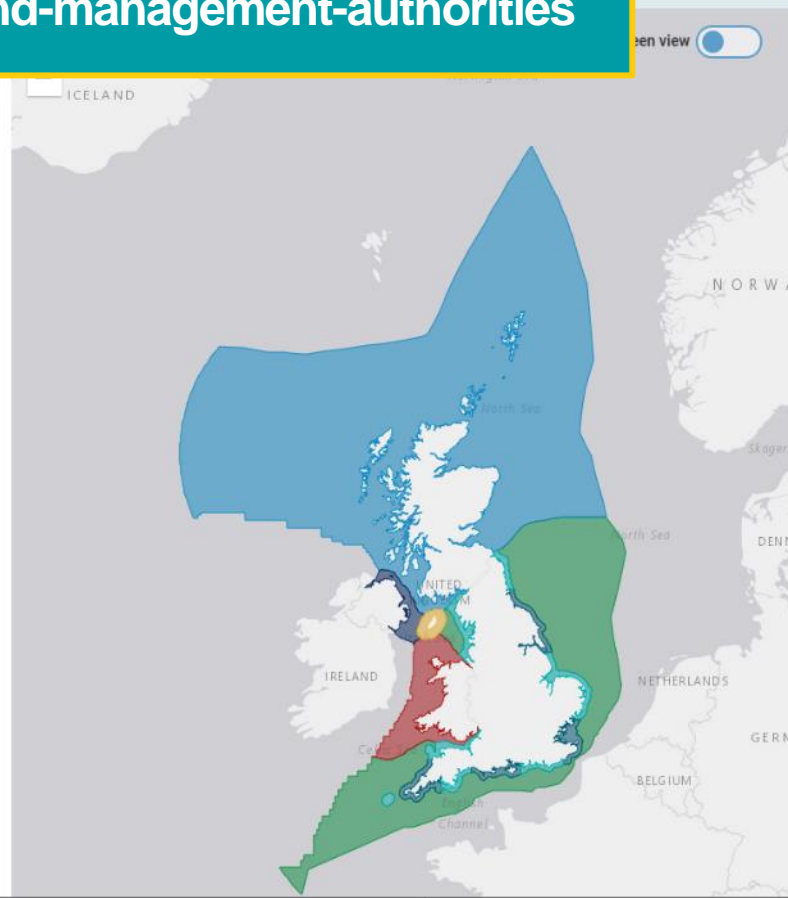
Regulators and Authorities

kingfisherrestrictions.org/regulators-and-management-authorities

This service provides information on commercial fishing gear restrictions in UK waters. For more information on any of the restrictions, please contact the relevant body using the details provided by clicking on the map.

Fishing regulators and authorities

- Scottish Government (Marine Scotland)
- Marine Management Organisation (MMO)
- Welsh Government
- Department of Agriculture, Environment and Rural Affairs (DAERA)
- Isle of Man Government
- Northumberland IFCA
- North Eastern IFCA
- Eastern IFCA
- Kent & Essex IFCA
- Sussex IFCA
- Southern IFCA
- Devon & Severn IFCA
- Cornwall IFCA
- Isles of Scilly IFCA
- North Western IFCA

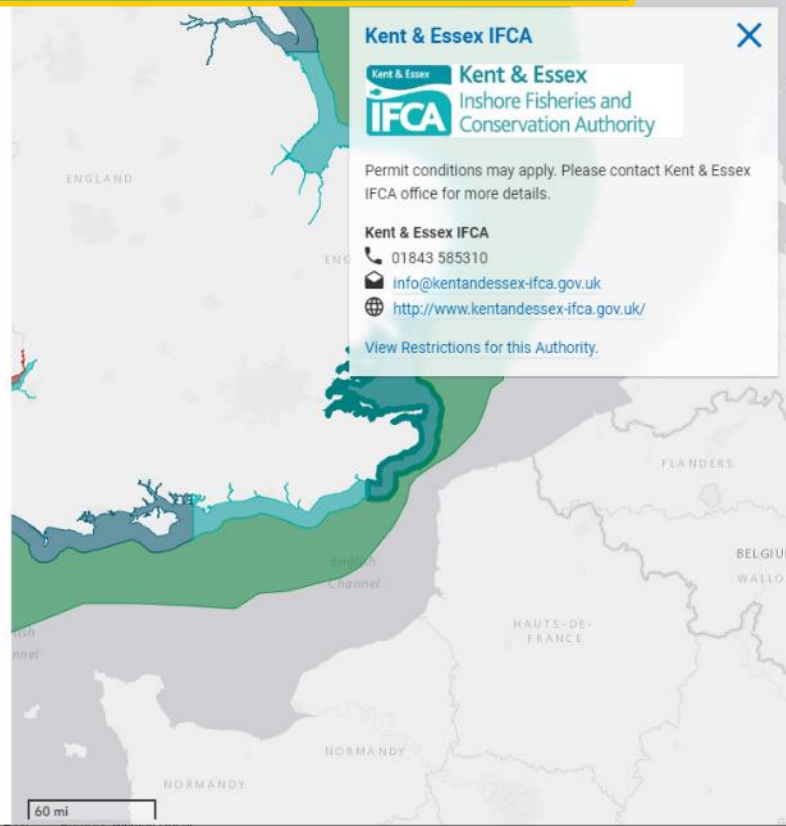


kingfisherrestrictions.org/regulators-and-management-authorities

For more information on any of the restrictions, please contact the relevant body using the details provided by clicking on the map.

Fishing regulators and authorities

- Scottish Government (Marine Scotland)
- Marine Management Organisation (MMO)
- Welsh Government
- Department of Agriculture, Environment and Rural Affairs (DAERA)
- Isle of Man Government
- Northumberland IFCA
- North Eastern IFCA
- Eastern IFCA
- Kent & Essex IFCA
- Sussex IFCA
- Southern IFCA
- Devon & Severn IFCA
- Cornwall IFCA
- Isles of Scilly IFCA
- North Western IFCA



Downloads - The Seafish Kingfishi

kingfisherrestrictions.org/downloads

Fishing Plotter Downloads

kingfisherrestrictions.org/downloads

Select fishing plotter system(s)

Maxsea

Olex

Sodena

TimeZero

Penta

SIS Microplot

TMPlanner Quodfish

TRAX

Select fishing gear type(s)

Dredge

Trawl

Seine and surrounding nets

Traps and pots

Hooks, lines and longlines

Gillnets and entangling nets

Miscellaneous gear

ZIP

Maxsea - Dredge

2.27 MB

Download

ZIP

Maxsea - Trawl

2.00 MB

Download

ZIP

Olex - Dredge

1.71 MB

Download

ZIP

Olex - Trawl

1.51 MB

Download



kingfisherrestrictions.org/fishing-restriction-map

Let's get started

Select a fishing type below to quickly view relevant fishing restrictions.



Dredges



Trawls



Nets



Traps



Hooks and lines



Gillnets

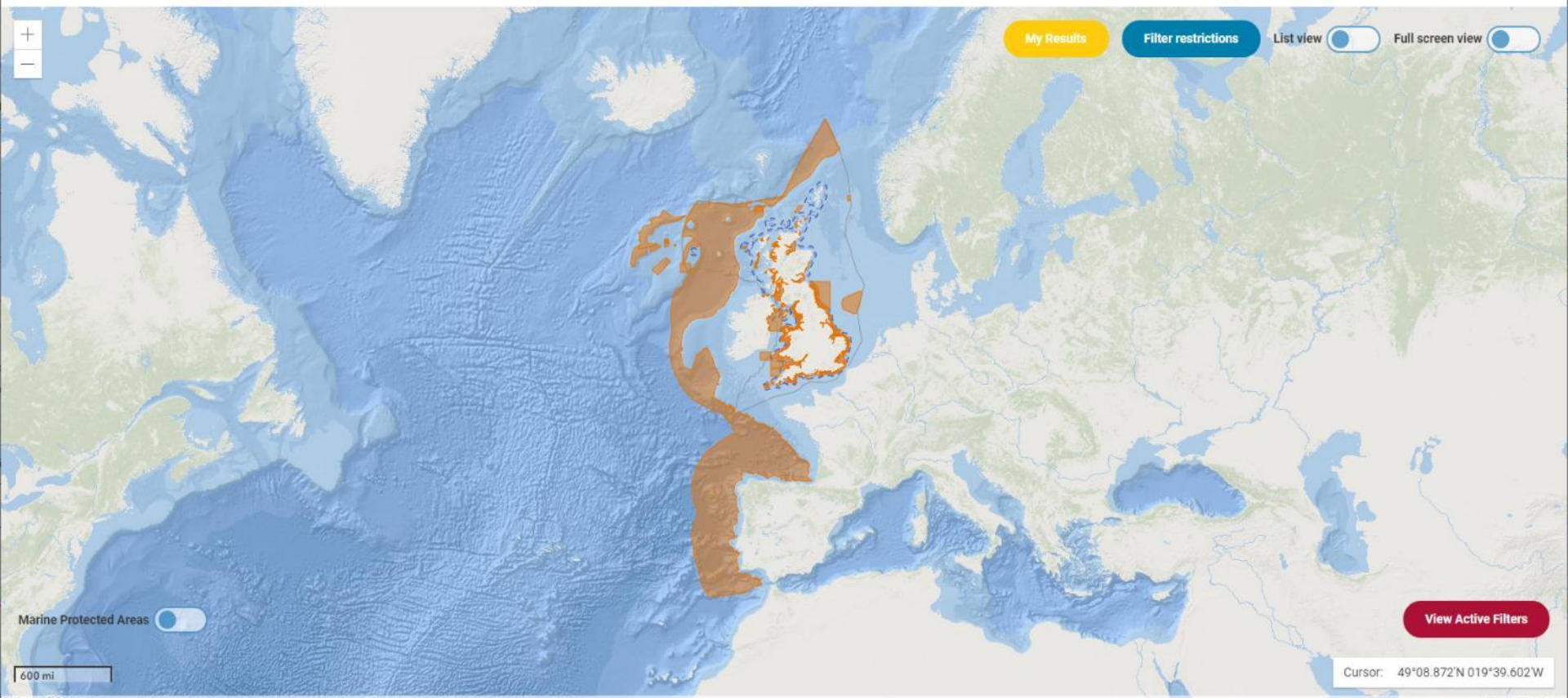


Miscellaneous

More Filters

Search

Show all restrictions



My Results

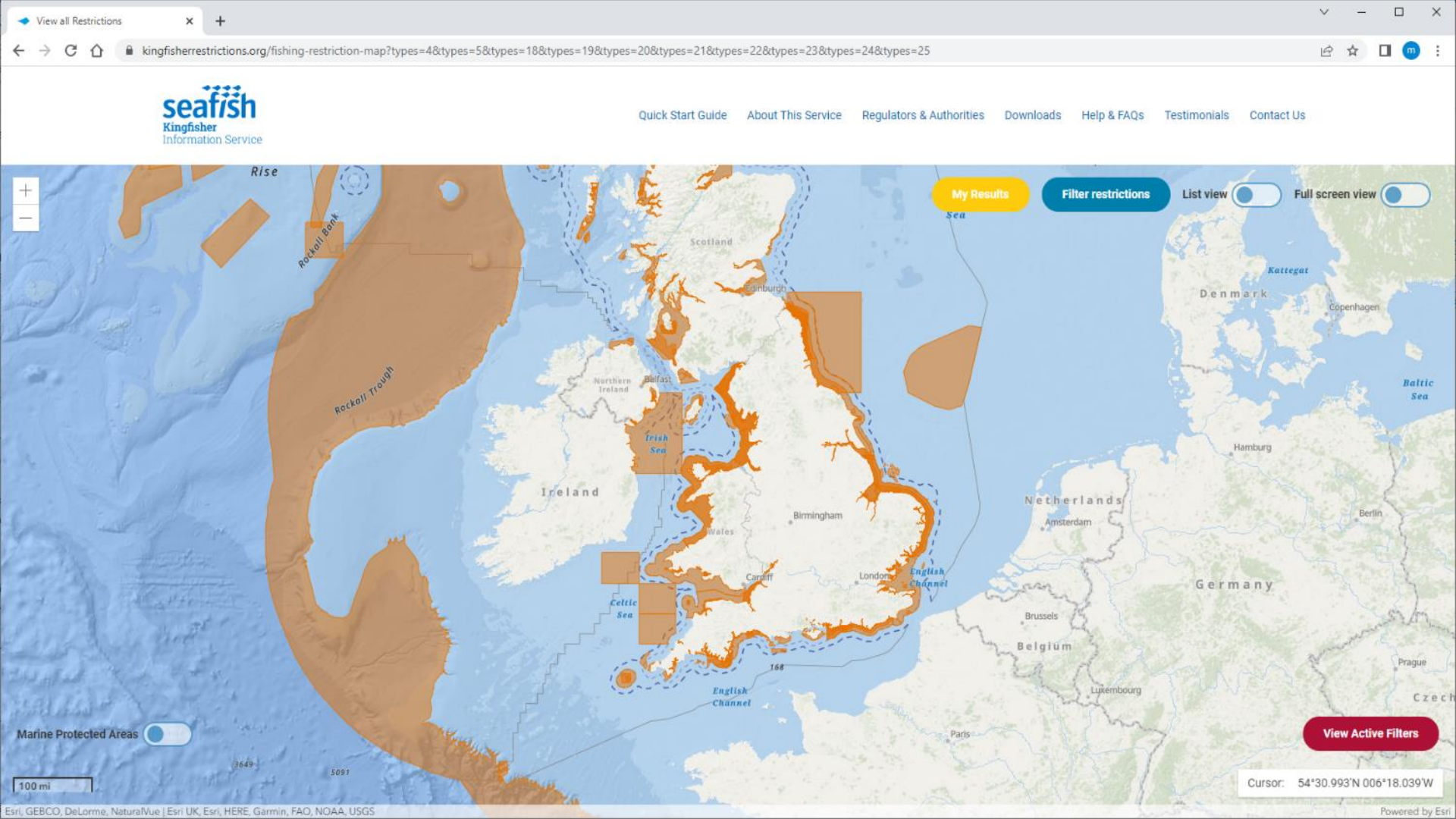
Filter restrictions

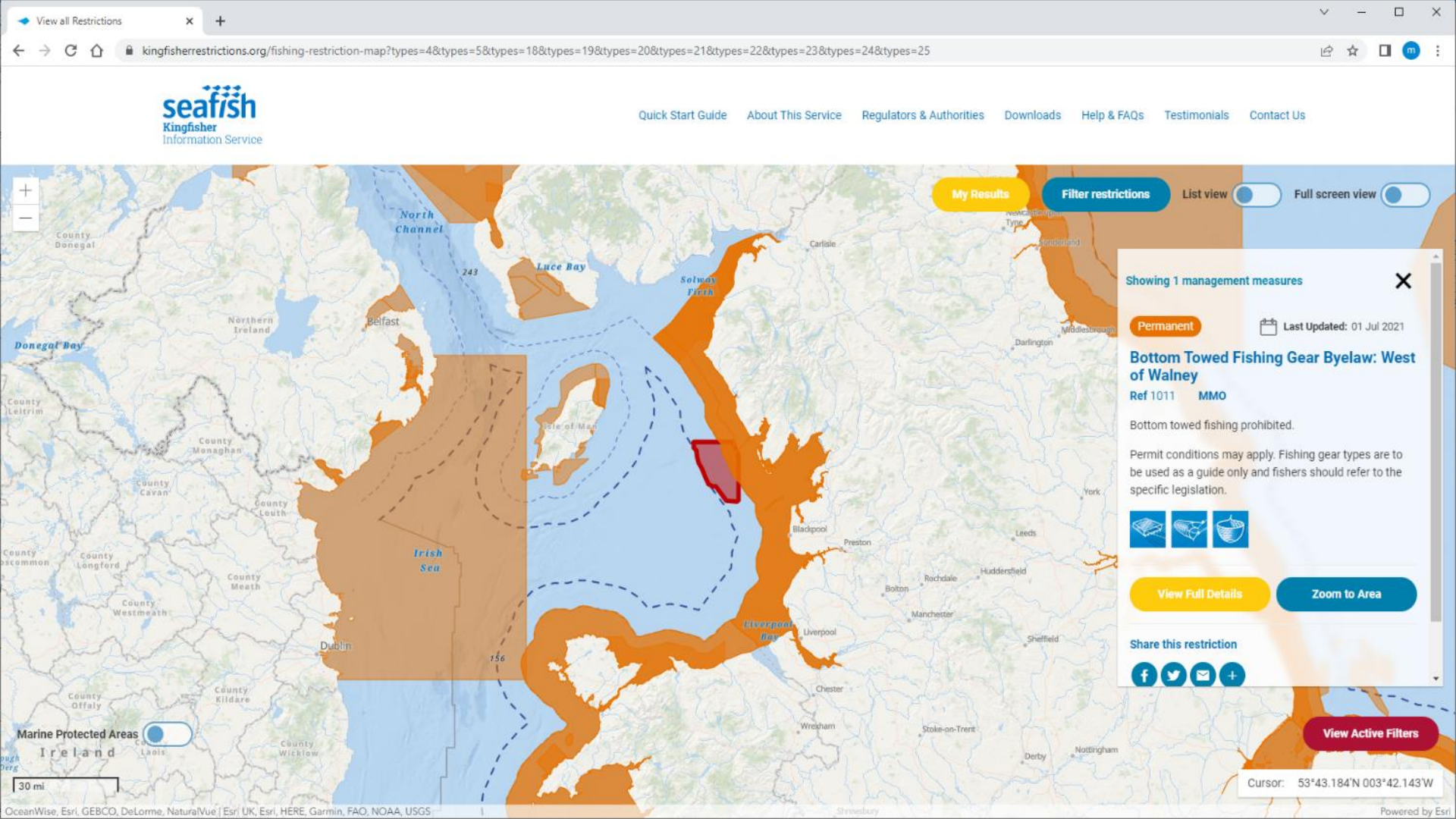
List view ☐

Full screen view ☐

Marine Protected Areas ☐

View Active Filters





Permanent

Legislative



Last Updated: 01 Jul 2021



Bottom Towed Fishing Gear Byelaw: West of Walney

Ref 1011 MMO

Bottom towed fishing prohibited.

Permit conditions may apply. Fishing gear types are to be used as a guide only and fishers should refer to the specific legislation.

Restriction 1 of 1

FULLY RESTRICTED



Applicable at all times



All gear types included in the restriction:

Dredges

Dredge

Trawls

Bottom trawl
Semi-pelagic trawl

Seine and surrounding nets

Seine net

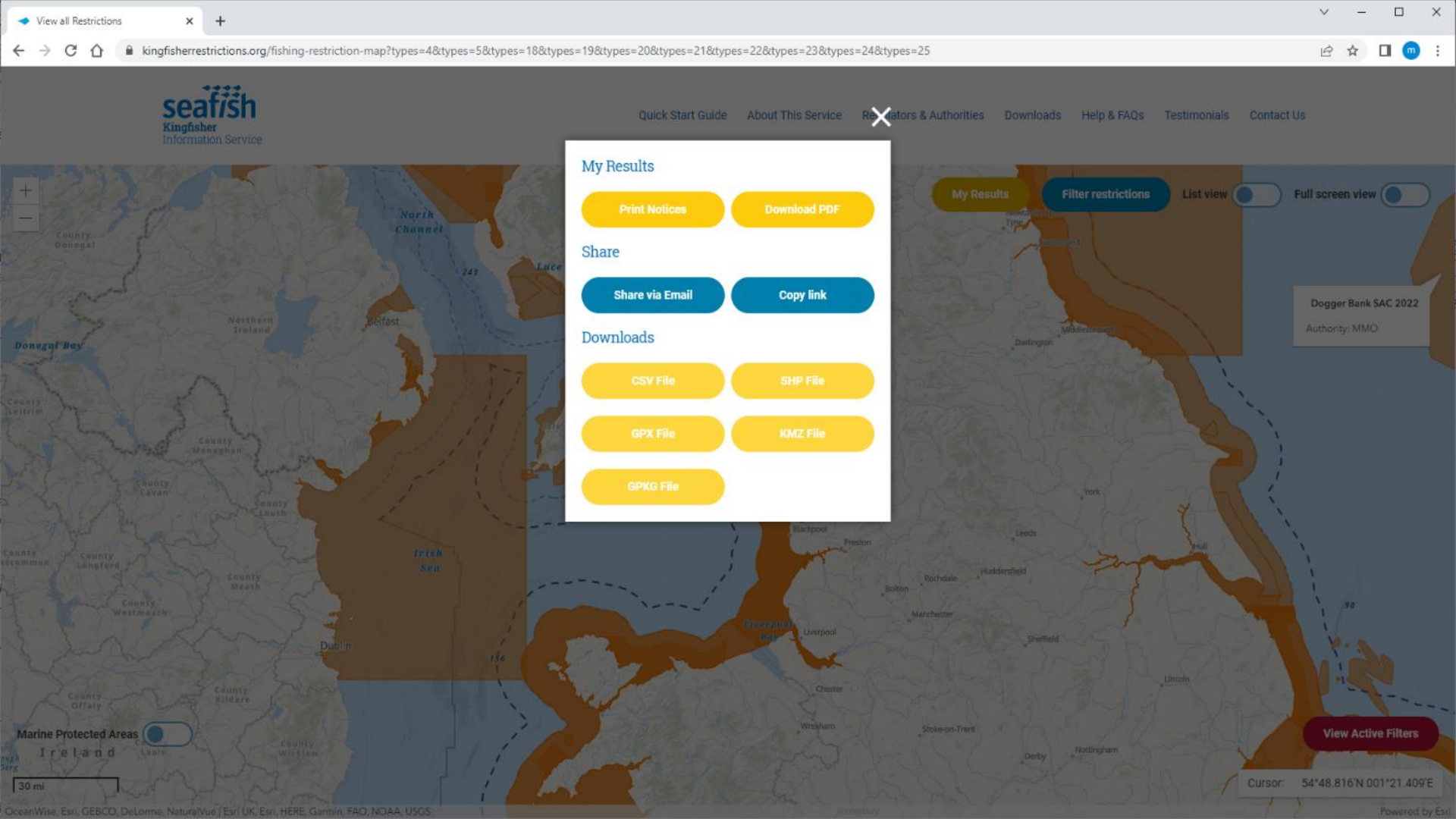
More Information

For further information on this restriction, please read the legislation in the link below, or contact the relevant authority:

Marine Protected Areas

Ireland

30 mi



Detailed Filters

☒ Filter results by fishing gear

☒ Nets

☐ Trawls

☐ Dredge

☒ Gill Net

☒ Hook and line

☐ Trap

Midwater trawl

Bottom trawl

☐ Pair trawl

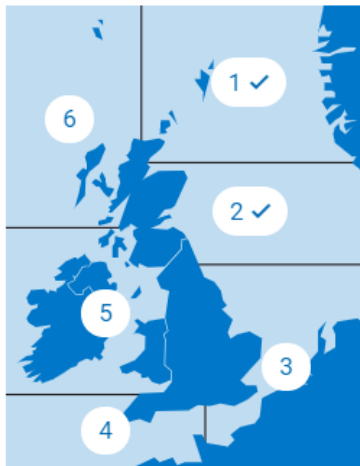
☐ Otter trawl

☐ Beam trawl

Search by keyword or plotter reference ⓘ

For example, 'Loch Gail', '4589'

☐ Search in specific fishing area(s)?



☐ Show me restrictions that apply **today**

or

☐ Search within specific timeframe?

Start 19/04/2021



End 30/08/2021



Show advanced filters ▼

☐ Vessel size

☐ Vessel power

Fishing Plotter Systems

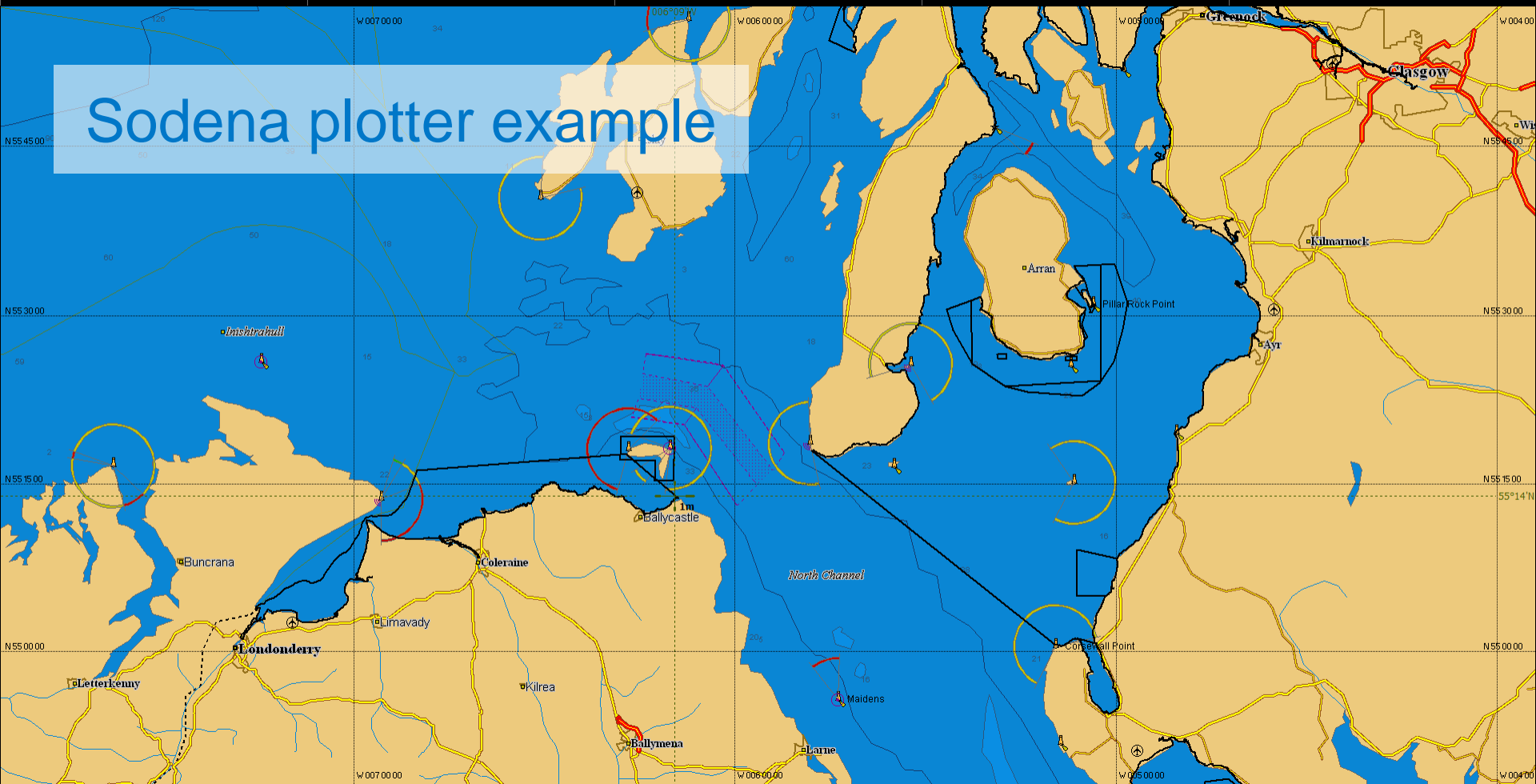
Fishing Plotters

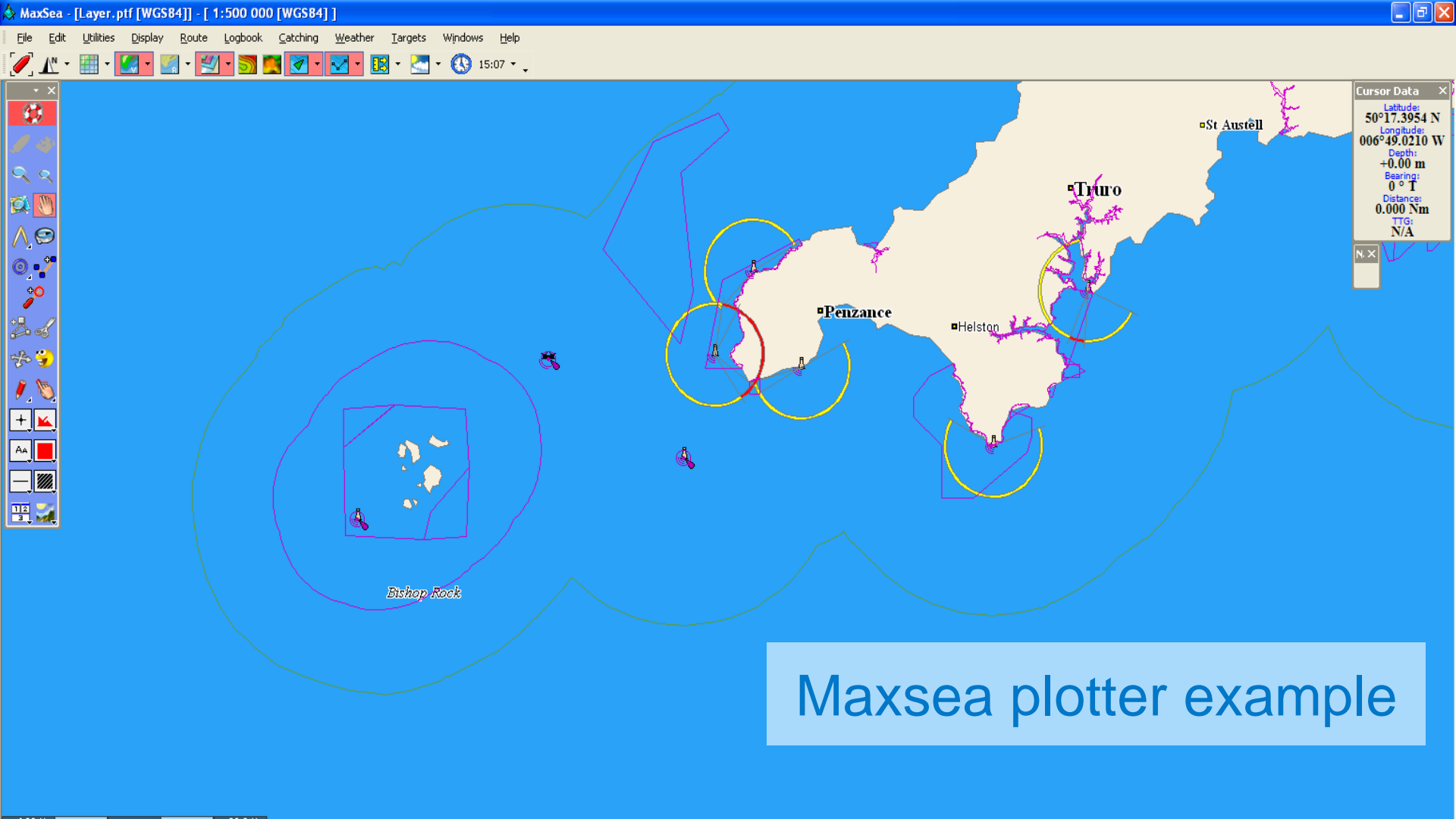
Plotters don't offer the same functionality as a web map and are limited in the information which can be communicated.

Minimal approach for simplicity

- Simple line on a map
- Reference code which states the restricted gear
- Gear codes from FAO are used (printed guide provided)
- Designed to be used in tandem with the website

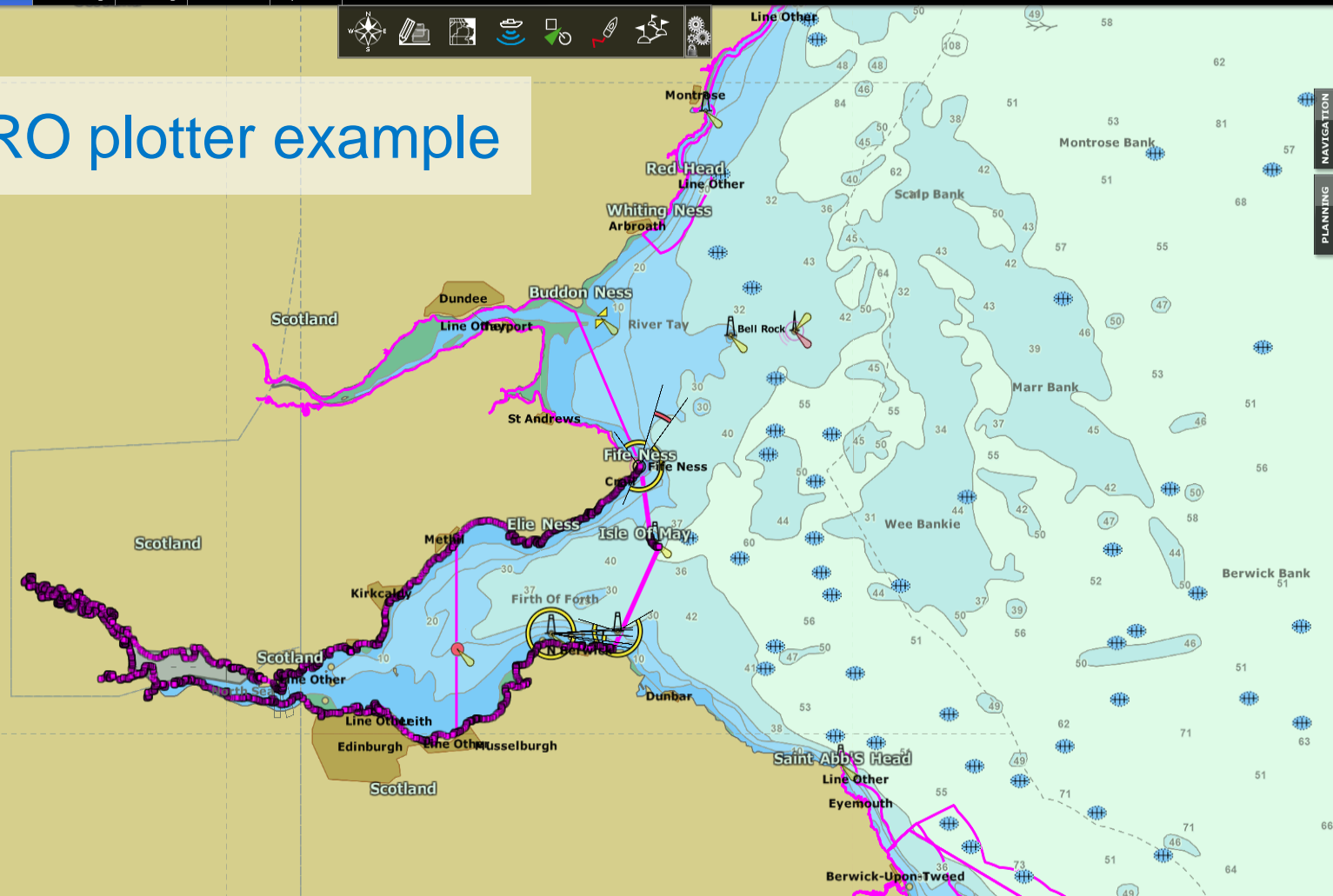
Sodena plotter example

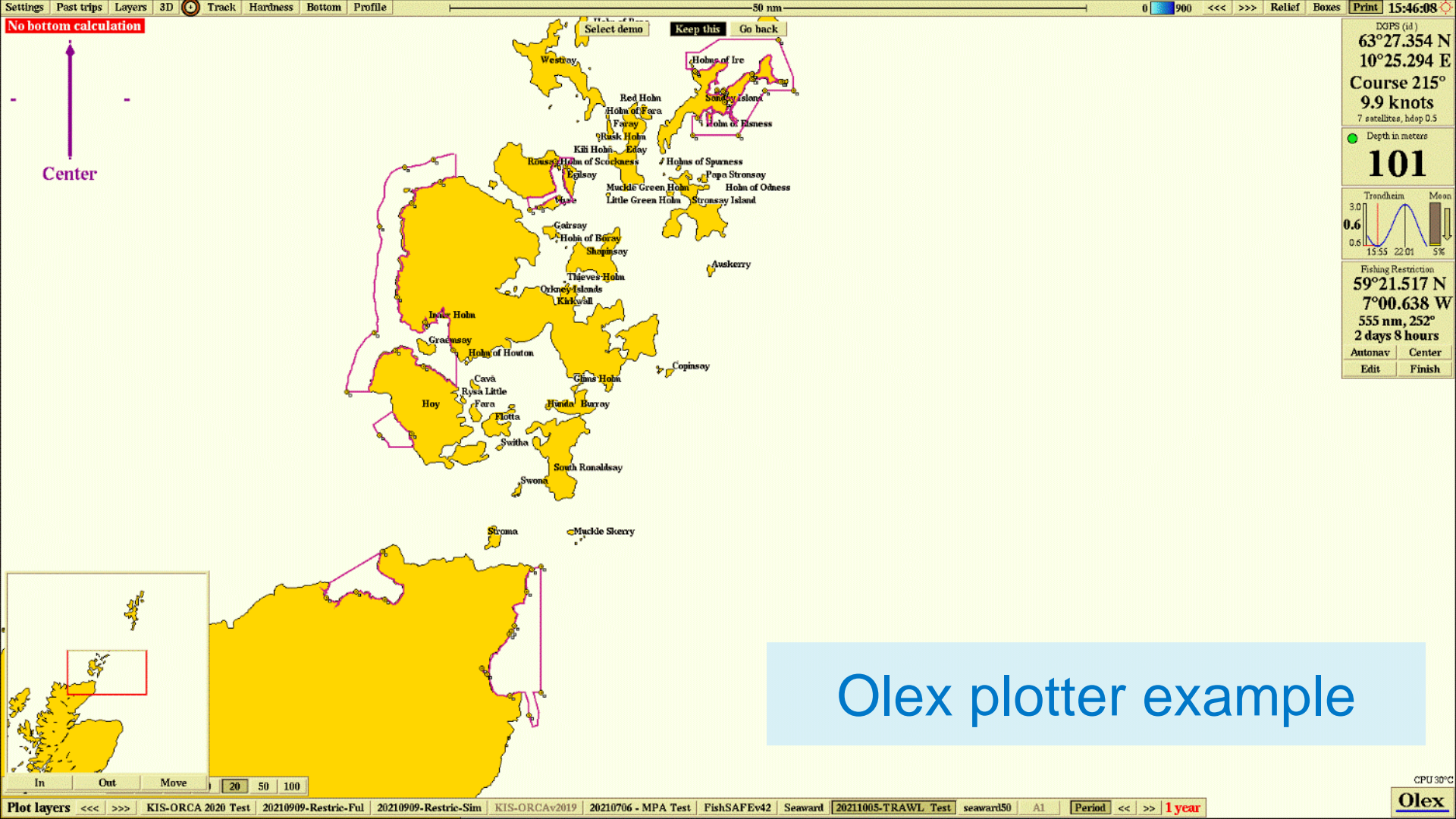


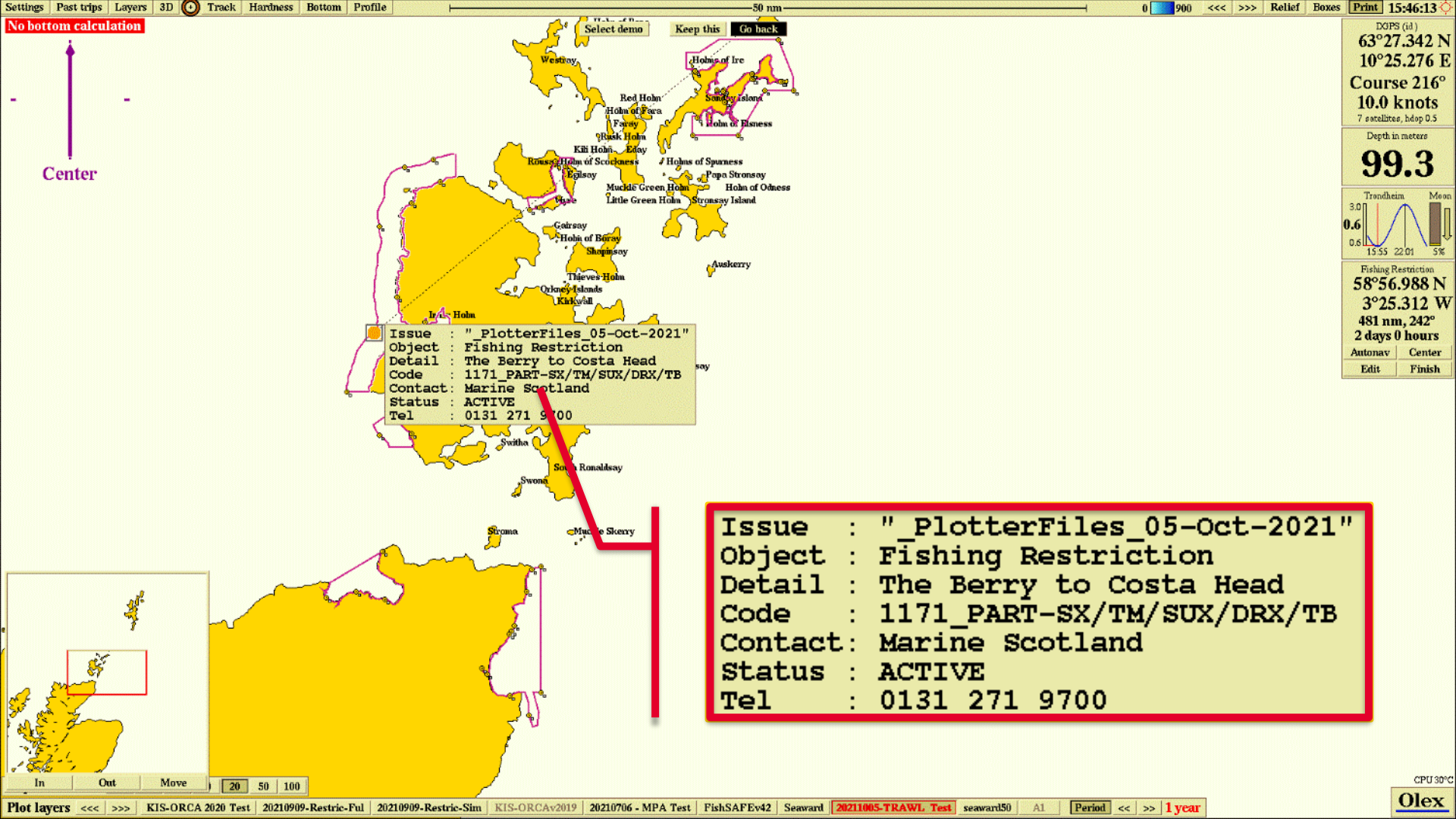




TIMEZERO plotter example







Fishing Plotters

Example of codes used

1290 _ FULL-SX/SUX/TB/TM _ PART-DRX

Reference number
for website

Fully restricted
gear codes

Partially restricted
gear codes

UK Fishing Restrictions from Kingfisher

A fishing gear focussed view of restrictions in UK waters.



NOVEMBER 2021

The Kingfisher Restrictions website by Seafish enables fishers to view, share and download UK wide fishing gear restrictions from a single place. In addition, fishers will also be able to see these restrictions whilst at sea using the associated plotter files. It is important to use the website and plotter data in tandem to have all the information on restricted areas.

Fishing plotter systems will display the restriction boundary and, where possible, a unique reference code explaining the restriction on fishing gear in the area. Gear can be fully restricted all year round, or partly restricted by seasonality, permit requirements, or gear specifics such as mesh size. See overleaf for a full list of the fishing gear codes in use.

Example unique reference code

In this area (number 1290), seine nets, surrounding nets, bottom trawls and midwater trawls are fully restricted. Dredges are also partly restricted.



For more information about a restriction, enter the 4-digit reference into the keywords search box on the website.

www.KingfisherRestrictions.org

OVER 1500
RESTRICTED
AREAS

15 REGULATORY
AUTHORITIES



MOBILE (ACTIVE) FISHING GEAR

	Fishing gear name	Code
Dredges	Dredge	DRX
	Hand dredge	DRH
	Mechanised (suction) dredge	DRM
	Towed dredge	DRB
Seine and surrounding nets	Seine net	SX
	Beach seine	SB
	Boat seine (inc. Danish, Scottish, and Pair)	SV
	Surrounding net	SUX
	Purse seine	PS
Trawls	Lampara (ring) net	LA
	Bottom trawl	TB
	Beam trawl	TBB
	Bottom pair trawl	PTB
	Bottom otter trawl	OTB
	Twin bottom otter trawl	OTT
	Multiple bottom otter trawl	OTP
	Midwater trawl	TM
	Midwater pair trawl	PTM
	Midwater otter trawl	OTM
	Semi-pelagic trawl	TSP

STATIC (PASSIVE) FISHING GEAR

	Fishing gear name	Code
Hooks, lines and longlines	Hook and line	LX
	Hand-operated pole-and-line	LHP
	Mechanised pole-and-line	LHM
	Trolling line	LTL
	Vertical line	LVT
	Longline	LL
	Drifting longline	LLD
	Set longline	LLS
Gillnets, entangling and lift nets	Gillnets and entangling nets	GEN
	Set gillnet (anchored)	GNS
	Drift gillnet	GND
	Encircling gillnet	GNC
	Trammel net	GTR
	Combined gillnet-trammel net	GTN
	Fixed gillnet (staked)	GNF
	Lift net	LN
	Boat operated lift net	LNB
	Portable lift net	LNP
Traps and pots	Shore operated stationary lift net	LNS
	Trap	FIX
	Aerial trap	FAR
	Barrier, fence or weir	FWR
	Fyke net	FYK
	Pot/Creel	FPO
	Stationary uncovered pound net	FPN
	Stow net	FSN
	Cover pot or lantern net	FCO
	Cast net	FCN
Other gear	Miscellaneous	MHX
	Hand gathering	MHI
	Electric fishing	MEL

What now?

Now

1. Website hosting and maintenance
2. New restrictions or updates are being incorporated into the database and website
3. Promotion of new restriction via the Kingfisher Bulletin app.
4. Developing ideas for 'phase 2' ahead of stakeholder engagement.

The Future

Further development and continuation:

1. Annual release of updated plotter data
2. App development and greater use of alerts
3. Temporary/voluntary restrictions and closures
4. More technical detail and/or habitat information.
5. Possible to incorporate:
 - Technical measures?
 - Species restrictions?
6. Stakeholder engagement.

“...invaluable to our members as they seek to interpret and understand the myriad of rules and regulations which directly apply to them.”

“...represents a useful resource to our members.”

“...brings transparency to the regulations, to know where they apply, and make what is a rapidly growing and complex set of rules easier to follow.”

“...invaluable help for the fishermen. It will assure an easy access to the relevant information from an unique entry point.”

“The website and associated plotter files will be of great assistance to them [fishers] and others.”

Thank you

Matt Frow

Matthew.Frow@seafish.co.uk