



IFCA Management of Marine Protected Areas in English Inshore Waters

Robert Clark

Chief Officer

Association of Inshore Fisheries and Conservation Authorities.



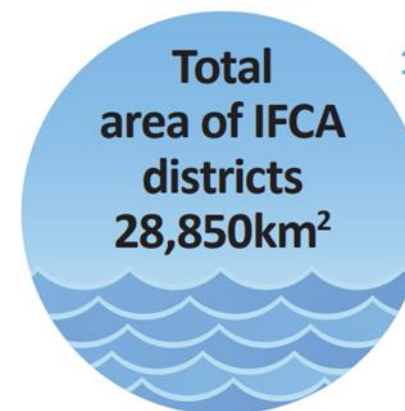
What is an IFCA?

Duties

- The IFCAs responsibilities are to achieve sustainable inshore fisheries, and to protect the marine environment via conservation objectives

Membership

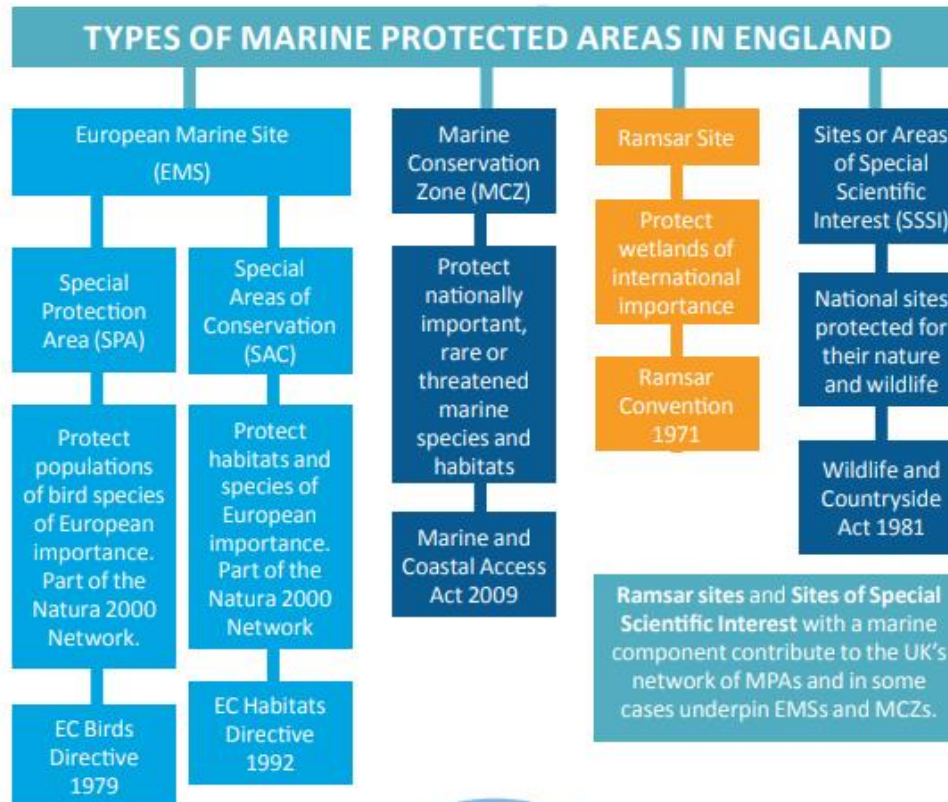
- Councillors from constituent local councils
- General Members
- 3 Members appointed by Statutory Authorities



10 regional IFCAs manage the seas to 6 nautical miles around the coast of England



Marine Protected Areas in England



Key

- European Legislation
- National Legislation
- International Convention

122
Total number of EMSs and MCZs within 0-6nm



IFCAs duties in EMS and MCZs

- IFCA's must exercise their functions which are relevant to conservation, so as to secure compliance with the requirements of the Habitats and New Wild Bird Directives*
- IFCA's must seek to ensure that the conservation objectives of any MCZ in the district are furthered**

*The Conservation of Habitats and Species Regulations 2018

**s.154 Marine and Coastal Access Act, 2009

How MPA management measures are introduced



- In the UK, the approach to managing MPAs is based on the protection of the designated features. There is a process of risk assessment applied to all the activities occurring in the site against the conservation objectives for the features.
- The process for developing management measures considers a risk assessment for the designated features and implements management measures which satisfactorily protect these features. This does not mean a complete ban on certain activities (e.g. fishing), but it does mean management and mitigation is required when the conservation objectives are considered at risk.
- The marine environment is a dynamic, frequently data-poor space and there can be substantial uncertainties in the evidence base underpinning the management of sites necessary to achieve their conservation objectives.
- The underlying legislation is important. For example, designation of MCZs can consider social and economic factors, but the site selection of EMS is based solely on nature conservation grounds. The Conservation Objectives and advice of the SNCBs is significant.

Participation in Decision Making

- Bringing many sources of information and perspectives to bear in the management of MPAs, is seen as key to building consensus amongst stakeholders, and the optimal management of the fishing activities within MPAs.
- Defra's revised approach to fisheries management in MPAs is intended to ensure that, management measures are identified for high-risk features, and additional fishery management measures for the conservation of the sites are put into place when required. The revised approach has resulted in detailed risk assessments and mitigating management implemented around the UK particularly in inshore waters around the UK.
- Evidential phases, pre consultation and consultation as well as direct representation are all opportunities to engage

A Revised Approach

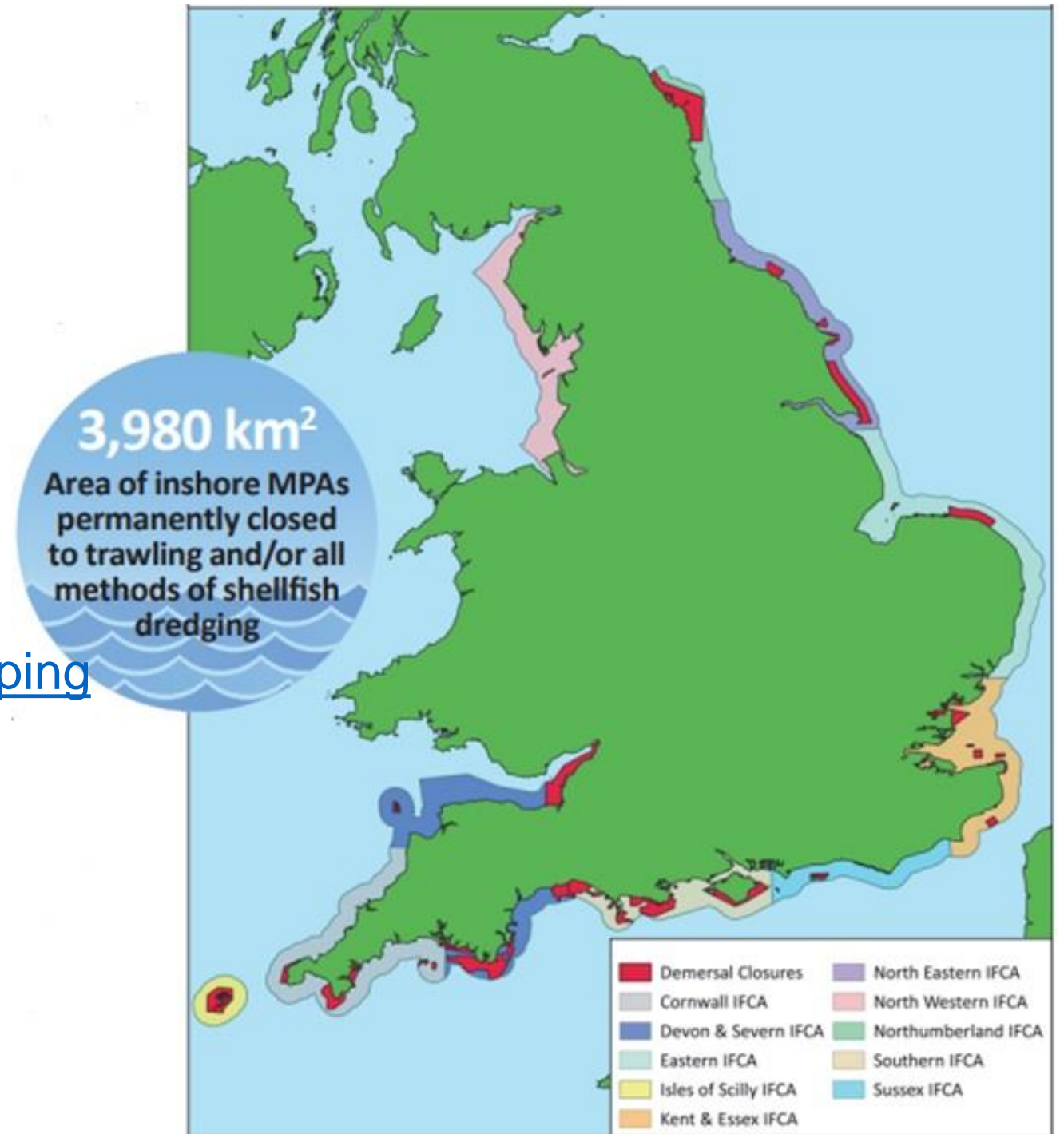
Vulnerability of EMSs features to different gear types

RED:	AMBER	GREEN	BLUE
Where it is clear that the conservation objectives for a feature (or sub-feature) will not be achieved because of its sensitivity to a type of fishing	Where there is doubt as to whether conservation objectives for a feature (or sub-feature) will be achieved because of its sensitivity to a type of fishing	Where it is clear that the achievement of the conservation objectives for a feature is highly unlikely be affected	For gear types where there can be no feasible interaction

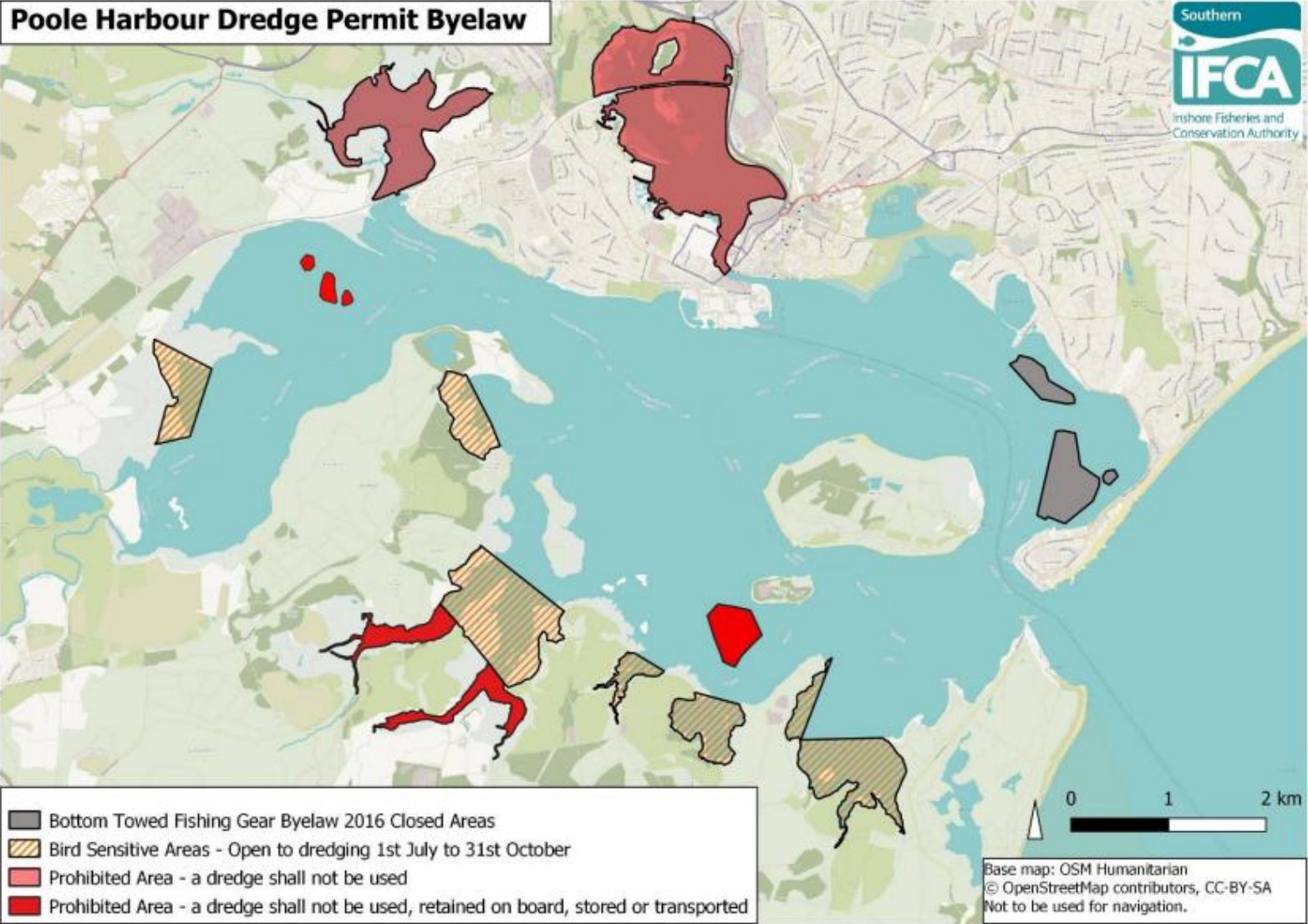


[Kingfisher | Fishing Restrictions mapping service for fishers | Seafish](#)

Areas within IFCA Districts where BTFG is restricted



Annex 5: Poole Harbour Dredge Permit byelaw spatial and temporal restrictions





23 NEW IFCA BYELAWS

INTRODUCED BY IFCAS BETWEEN 2013 AND 2018 TO DIRECTLY PROTECT MPA FEATURES

20 ADDITIONAL IFCA BYELAWS CONTRIBUTE TO THE PROTECTION OF MPAS

30 FURTHER MANAGEMENT MEASURES CONTRIBUTE TO MPA PROTECTION

- NATIONAL MEASURES
- REGULATING ORDERS/SEVERAL ORDER
- VOLUNTARY MANAGEMENT

ADDITIONAL IFCA BYELAWS PROVIDE MPA BENEFITS THROUGH THE MANAGEMENT OF INSHORE FISHING EFFORT.

16,062km²
of sea area within IFCA districts is covered by MPA designation

>13,500
interactions between commercial fishing and EMS features assessed by IFCAs

56%
Total coverage of IFCA districts by at least one MPA designation

1,125
Habitat Regulations Assessments completed by IFCAs

NUMBER OF INDIVIDUAL TYPES OF MPA WITHIN IFCA DISTRICTS

38 Marine Conservation Zones

39 Special Areas of Conservation

45 Special Protection Areas

Summary

- IFCAs are systems of co-management and local democratic governance
- IFCAs have duties to further the conservation objectives of MPAs
- IFCAs seek to balance the needs of fisheries and the protection of the marine environment
- Industry and wider stakeholders have an important role in supporting the evidence necessary to adequately manage MPAs.



Thank you

Robert.clark@association-ifca.org.uk

<http://www.association-ifca.org.uk/marine-protected-areas>

<https://twitter.com/AssociationIFCA>





References

- AIFCA (2018) Management of Inshore Marine Protected Areas by the IFCAs 2011 to 2018 booklet Available Online <http://www.association-ifca.org.uk/marine-protected-areas>
- Birchenough, S. (2022) Poole Harbour Special Protection Area (SPA) Appropriate Assessment - Issue of Permits Under Poole Harbour Dredge Permit Byelaw (2022-23 Season). Southern IFCA. Available Online <https://secure.toolkitfiles.co.uk/clients/25364/sitedata/Redesign/Poole-Dredge-Permit-Fisheries/HRA-PHDPByelaw-2022-23.pdf>
- Humphreys J. and Clark, R.W.E.(2019) Marine Protected Areas. Science Policy and Management. Elsevier, Oxford. ISBN: 9780081026984
- Clark, R.W.E, Humphreys, J., Solandt, J-L, Weller, C. (2016) Dialectics of nature: The emergence of policy on the management of commercial fisheries in English European Marine Sites. Marine Policy. 78:11-17. 10.1016/j.marpol.2016.12.021
- Defra, 2014. Revised approach to the management of commercial fisheries in European Marine Sites: overarching policy and delivery. Available online. <https://www.gov.uk/government/publications/revised-approach-to-the-management-of-commercial-fisheries-in-european-marine-sites-overarching-policy-and-delivery>